

7th Grade Science

Class Requirements and Guidelines

Mr. Cadolino

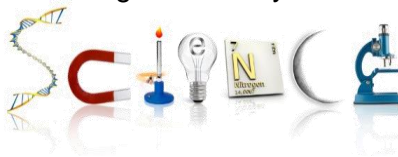
GOALS

- To gain an understanding and appreciation of physical and living sciences and their applications in the world around us.
- To learn and develop skills used in science through laboratory and field experiences.

STUDENT EXPECTATIONS

CHOOSE TO SUCCEED!

- Follow class rules and respect others.
- **Always** be prepared for class with appropriate materials (see below).
- Ask questions and participate in classroom discussions on a regular basis.
- Complete all assignments to the best of your ability and hand them in **ON TIME**.
- Attend extra-help if necessary.



GRADING CRITERIA

- **Tests / Quizzes (60%)**
 - All tests will be announced (minimum of two days in advance)
 - Quizzes may be unannounced.
 - Test and quiz formats will vary (multiple choice, fill-in, free response, etc.)
 - Test and quiz questions may be based on information provided through notes, homework assignments, labs, worksheets, and textbook reading.
- **Labs & Classwork (30%)**
 - Labs will be assessed by a grade on the lab assignment itself and/or by a lab quiz.
 - Lab safety and proper protocol are essential. Students will not receive any credit for a lab if laboratory safety procedures and/or lab instructions are not fully followed.
 - Classwork will be assignments worked on in class; format/type will vary (may extend to homework, if necessary). Major classwork assignments (that are not labs) will be averaged into this area.
 - *A charged and operational Chromebook will be a daily necessity and is a part of the student's required preparation and participation, as this will greatly impact the student's ability to complete most assignments.*
- **Homework (10%)**
 - Homework assignment will be graded as follows, unless otherwise stated:

□+ = 100%	□ = 85%	□- = 70%	0 = 0%
-----------	---------	----------	--------
 - **A part of the student's daily homework will include charging his/her chromebook and having it operational during his/her science class period.**
 - Homework is always due at the beginning of class and may be required to be handed in/submitted.
 - Homework not done will not receive credit and will result in a grade of a zero.
 - Homework will **not** be accepted late for full credit except from those who were absent or have extenuating circumstances (assessed on an individual basis, may require a note from a parent/guardian).
- **Composite Grading (Final Course Grade Calculation)**
 - Each marking quarter accounts for 22% of the student's course grade. The final exam accounts for 12%. **In the event of a modified school year, these percentages may be adjusted.**



SUPPLIES

*Students are expected to have their charged Chromebook with them everyday.



- Earbuds/headphones compatible with Chromebook
- 3 ring binder (shared with other classes)
- Loose-leaf paper
- #2 pencils
- Calculator - 4 function or scientific
- Black/blue pens
- Pencil sharpener
- Highlighter
- Colored pencils



LATE ASSIGNMENTS

- All assignments will be accepted late if handed in within the same marking quarter in which they were assigned. If handed in within a few days after the due date and prior to the assignment being returned to the class, students may receive up to a 10% deduction; if handed in after the assignment has been graded and returned, students may receive up to a 50% deduction of their grade for that assignment.

WORK MISSED DUE TO ABSENCE

- It is the responsibility of the student to obtain and make up **all** work missed due to absence.
- All assignments, labs, quizzes, and tests must be made up. Students may be required to come during lunch and/or stay after school in order to make up missed work.
- Normally, students are expected to be caught-up with missed work within one day of an absence. If absent on the day a quiz or exam is administered, the student must be prepared to take the quiz or exam on the day of return. The quiz/exam will be in the testing room.
- In the event of an absence, please refer to Google Classroom for information regarding daily assignments.

EXTRA-HELP

- Extra help is available during 7th grade lunch periods and after school by appointment.
- Students are **STRONGLY** encouraged to schedule extra-help at the earliest indication of concern.

CLASSROOM ELECTRONIC DEVICE POLICY

- To foster an environment in which learning is the primary focus, the use of personal electronic devices (phones, etc.) in class will be strictly limited. Unless explicitly permitted by the teacher, all devices must be stored out of sight.

I have read and understand the course requirements and guidelines for 7th Grade Science.

(Please sign this form and submit through GC by _____)

Student's Name (please print)

Parent/Guardian's Name (please print)

Student's Signature

Parent/Guardian's Signature



7th Grade Science

Mrs. Conrad

Lconrad@3villagecsd.org



Welcome to what will undoubtedly prove to be an unusual year in education. The transition to junior high school can be challenging under the best of circumstances, and these are anything but the best of circumstances. Whether you are at home as a remote learner or here at *Gelinas*, please know that I will do everything in my power to make this the smoothest transition possible for each and every student regardless of the unique situations we may face this school year. I will be here for both parents and students throughout the year to ensure that this will be as successful a school year as possible in science class. This is a partnership that begins on day 1, and I am confident that we can overcome any obstacles we face if we work together.

“

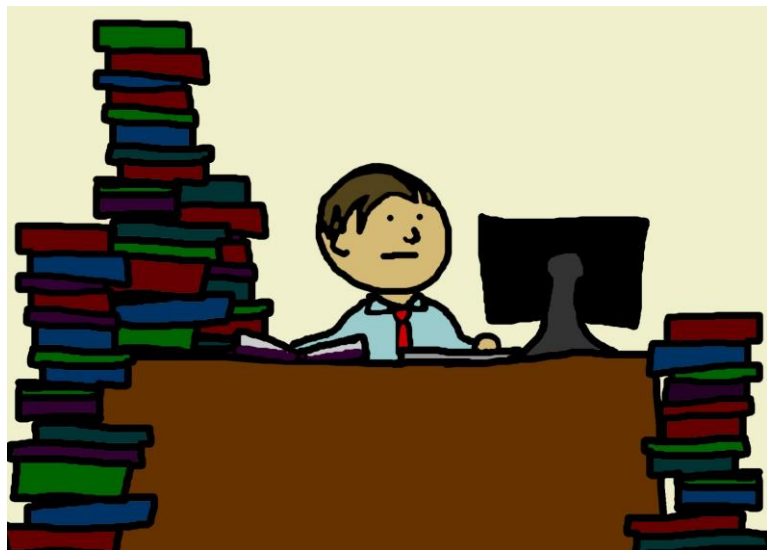
Always remember you are braver than you believe, you are stronger than you seem, and smarter than you think.

”

- Winnie-the-Pooh (A.A. Milne)

Curriculum

The New York State Science Learning Standards were implemented in 2019 and



require a new integrated science curriculum in 7th grade. The topics covered will be inclusive of the four main branches of science - biology, chemistry, earth science, and physics. While the general topics remain the same, the depth and scope of the material will be significantly more rigorous in the honors classes and the details are listed below:

Course Outline:

- 1. Chemical Properties and Reactions:** Matter, measuring matter, phases of matter, chemical and physical properties and changes, evidence of chemical reactions, and energy changes in chemical reactions.
Additional Honors Topics: Rates of chemical reactions, models of chemical reactions, phase changes and phase change diagrams, and heat calculations from phase change diagrams.
 - 2. Chemical Reactions in Living Things:** Chemical reactions, conservation of matter, photosynthesis, respiration, energy and growth.
Additional Honors Topics: Balancing chemical equations, photosynthesis as it's related to growth, conversion of atmospheric CO_2 to the cellulose polymer, and polymerization.
 - 3. Ecosystems:** Ecosystems, abiotic and biotic factors, ecosystem relationships, food chains, food webs, resources and limiting factors, disruptions to an ecosystem, global ecosystems, temperature changes, and global warming.
Additional Honors Topics: Renewable and non-renewable energy sources, the chemistry behind fossil fuel combustion, and the effect of excess carbon dioxide in the atmosphere.
-

-
4. **Weather and Climate:** Climate, factors that affect climate, global winds and patterns, coriolis effect, weather, factors that affect weather, air masses and fronts, and weather maps.
Additional Honors Topics: Global warming and its impact on weather factors and weather patterns, severe weather, hurricane formation, and hurricane tracking.
 5. **The Earth-Moon-Sun System:** Seasons, rotation and revolution, moon phases, and eclipses.
Additional Honors Topics: Seasons by hemisphere, waxing and waning moon phases, total and partial eclipses and causes, tides, and types of tides.
 6. **Gravity and the Solar System:** Parts of a solar system, scale and proportion of the solar system, galaxies and forces within a galaxy, gravity, and gravitational forces and factors.
Additional Honors Topics: Creation of the solar system, geocentric and heliocentric models, and stars.
 7. **Electric and Magnetic Forces:** Magnets, magnetic fields, factors within a magnetic field, electricity, currents, electric fields, and electromagnets.
Additional Honors Topics: Earth's magnetic field, poles, pole reversals, compasses and orienteering.
 8. **Forces and Motion:** Motion, reference point, balanced and unbalanced forces, Newton's three laws of motion, collisions, and simple machines.
Additional Honors Topics: calculating and graphing speed and acceleration, strength of forces, work, calculating work, and the mechanical advantage of machines with calculations.

Google Classroom

Our entire class will be conducted through google classroom. There will be a calendar listed so you know what is happening in class and what you need to do for homework. Assignments will be accessed and submitted through our google classroom. Please join our class using the following codes by your class period:

Period 1: Period 2: Period 6:
Period 8: Period 9:

If you have trouble joining the class please contact me as soon as possible to resolve the issue so you don't miss any class time! For more significant chrome book issues please contact the IT support team in the library. You will figure out pretty quickly that you have more computer knowledge than I do! :)

Absences, Quarantines, Missed school - Oh My!

Given this unusual school year, absences are going to happen. The good news is



that you have options to help you stay on track even when you are not in school. Due to the Covid-19 pandemic the district has implemented a new remote learning plan. This means that if you are quarantined or home sick for an extended period of time you have the choice of logging in remotely and listening to the class live or you can choose home tutoring and receive 2 hours of 1 on 1 tutoring with your teacher. The specific instructions on how to

implement either of these options can be arranged through the school.

School Wide Quarantine or Closure

Due to these uncertain times we are facing, there may come a time when school has to close for a period of time, although that appears unlikely at this time. During this time all students will become remote learners and class will continue as close to normal as possible. This will require flexibility from everyone. It will look

differently than it did in elementary school and will involve more time on the chromebooks for everyone. In the event that we are all at home you will follow your class schedule the same way you do when you are in school. You will need to log on to our class during the regularly scheduled time slot. In the event that happens you will receive more information on how to do this.

Grades and Grading Policy

Grading Policy: Everything we do counts towards your quarterly and final course grades. Assignments, labs, projects, quizzes, and tests are all weighted according to difficulty. Each will be assigned a point value and the grade can be interpreted as follows:

$$\frac{\text{Total points you earned}}{\text{total possible points}} \times 100 = \text{grade}$$

For example: On a laboratory activity you received a 30/35, which means you earned 30 points out of a possible 35 points or using the equation

$$30 / 35 \times 100 = 85.7\%$$



LATE ASSIGNMENTS ● All assignments will be accepted late if handed in within the same marking quarter in which they were assigned. If handed in within a few days after the due date and prior to the assignment being returned to the class, students may receive up to a 10% deduction; if handed in after the assignment has been graded and returned, students may receive up to a 50% deduction of their grade for that assignment.

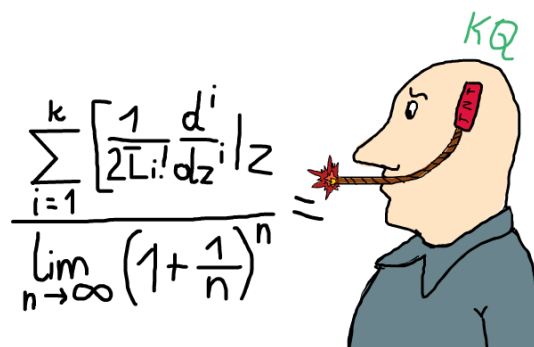
Quarterly and yearly grades: These will be calculated using individual grades on assignments and the following percentages:

Tests and quizzes: 60%

Labs and Classwork Projects: 30%

Homework (including being prepared with charged chrome book) 10%

Yearly grades will be calculated with each quarter at 22% and the final exam at 12%

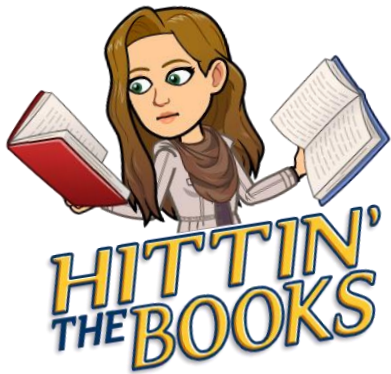


Extra

Help

Extra help will be provided every Tuesday and Thursday during 7th grade lunch. In person extra help will begin after students eat their lunch in the cafeteria because we are no longer allowed to have students eat lunch in our rooms. Virtual extra help will begin at approximately 11:00 on the same days. Arrangements can be made for extra help at different times under certain circumstances. Please let me know if you have any questions or want to schedule an appointment.

Welcome to Gelinas!
Please remember I am always here to help, all
you have to do is ask!



Science 8 Course Information

Ms. DeMartino

ndemarti@3villagecsd.org



Supplies

- ✓ Chromebook (charged **everyday**)
- ✓ Headphones (compatible with ChromeBook)
- ✓ Pens & Pencils
- ✓ Calculator (same one from Math Class)
- ✓ Notebook/folder (loose leaf paper in a binder will work)

Occasionally **at home** you will be asked to cut,color or measure so having scissors, a glue stick, a ruler and colored pencils handy at home might be helpful. You do not need to carry these to school if you are attending class in-person.

Grading Policy

Each quarter will consist of the following:

- 1) **Assessments (Tests, Quizzes and Projects) 60%**- You will be asked to show your understanding of content that was presented in class. Additionally, you might be asked to use the material you have learned to complete several projects throughout the course.
- 2) **Labs/Activities 30%**- In order to learn some of the skills that scientists use, we will be completing many labs. Labs might include some kind of written report, data sheet,and/or questions.
- 3) **Homework 10%**- Homework may include a chance to complete what we were working on in class, a review of class materials or an introduction to content that we will work on the the next day. Homework is graded based on effort.
 - Homework Complete= 10 out of 10
 - Incomplete Homework= 8 - 5 out of 10 (dependent on level of completion)
 - Missing homework= M in the portal which is a 0
 - Late homework= Automatically starting with a 5 out of 10

Google Classroom: All class assignments will be posted on Google Classroom. Assignments will be turned in digitally through Google Classroom unless otherwise specified as a paper assignment. In addition, all class notes and review material will be posted on Google Classroom. Students are responsible to print any misplaced paper materials that were given to them in class

All assignments are due at the beginning of the class period on the due date. Any work not

submitted on time (even if you are absent) will be marked as "missing" in the grade portal, that way you can see what you missed. Once the work is submitted, the "missing" grade in the portal will be updated to reflect the score you received on the assignment (minus points for being late if applicable).

Communication: Everyday you should check the class stream in Google Classroom. Your teacher will post important reminders for the entire class or sometimes directly write you a message. (Don't worry, if your teacher writes you a personal message on the "stream", no one else can see it.) Make sure you leave the "notifications" for Google Classroom on. Additionally, you should check your district-issued email account on a regular basis.

If you submit an assignment through Google Classroom, you should check back for a grade and teacher feedback. Comments written on your docs, slides, etc. by your teacher are to help you understand content better or to see where you might have made a mistake. **Reading this feedback is probably the most important thing you can do in this class.**

If you need to contact your teacher, please use my district email address (ndemarti@3villagecsd.org). If you write outside of school hours, please wait until the next school day to get a reply.

Digital Tools: We will use a variety of digital tools in this class which may include Google Suite, Gizmos, Kami, Pear Deck, EdPuzzle, Quizziz, WeVideo and our e-text and interactive tools. **Your district-issued Chromebook must be used to complete your assignments.**

Late Policy: Unless you have a valid reason, assignments need to be submitted on time and **will lose 10% of points.** Work submitted after a time period of 1 week **will lose 30%.** If a student is absent from school, s/he should meet with the teacher upon returning to make a plan to make up any missing assignments. Being absent is not an excuse for not making up an assignment or a homework!

Extra Help: If you do not understand some material or have been absent, please come for extra help. Extra help will be available during period 6 lunch in room 220. You must sign-up for extra help in advance so your teacher knows you plan to attend.



GELINAS JUNIOR HIGH SCHOOL

COURSE REQUIREMENTS & EXPECTATIONS



EARTH SCIENCE REGENTS - MRS. DIFEDE
(cdifede1@3villagecsd.org)

Course Description:

The purpose of this course is to introduce students to the study of Earth Science and to develop critical thinking and laboratory skills. Some topics that will be discussed include topography, geology, erosional and depositional processes, plate tectonics, geologic history, astronomy, meteorology, and more. The overall course grade is based on the four quarters (22% per quarter) and the Regents Exam grade (12%). **A minimum of 1200 minutes of laboratory investigations must be completed by the middle of May in order to sit for the June Earth Science Regents exam. Students that do not meet the State laboratory requirements will not be allowed to take the Regents exam.**

Materials:

- 3 ring binder (1.5 inch)
- Loose leaf paper (approx. 20 sheets)
- 3 subject dividers labeled (Classwork, Assessments, Labs)
- 2 pens (blue or black)
- 2 #2 pencils
- 2 highlighters
- Colored pencils (ROYGBIV)
- Calculator (basic)
- Chromebook (charged) and charger
- Earbuds/headphones compatible with Chromebook

Students Expectations in Class:

- Be prepared for class (bring binder, writing utensils, Chromebook, and charger)
- Sitting with binder open and ready to take notes when the bell rings
- Raise hand and wait to be called on before speaking
- Respect yourself, classmates, and teacher

- Bring a positive attitude to class and participate in class discussions
- Ask questions
- Complete all assignments
- Cell phones are not permitted during class and should be kept in your backpack
- Students need to abide by the policies and procedures outlined in the **Chromebook User Agreement**

Monitoring Student Performance:

Parents and students can view students' grades on-line via the "Parent Portal" link on the District's website (3villagecsd.org), parents can view grades for classwork, homework, labs, assessments, and the quarter average, as well as see any missing assignments. Parents and students are encouraged to check the portal weekly to stay up to date with assignments and assessments. Please email me if you have any questions or concerns at cdifede1@3villagecsd.org.

Google classroom will provide materials and resources for each topic that we cover this school year. Class notes, videos, laboratory activities, and slide presentations can be found on Google Classroom. Parents are encouraged to occasionally check Google Classroom to view student work.

The Three Village School District subscribes to an educational website (www.castlelearning.com) that provides teachers and students with practice test questions. Students will be assigned teacher-designed question assignments that will be graded online. Parents can monitor student progress by visiting the website, entering the student's username and password, and clicking on completed assignments. In addition, there are other features that allow parents to identify student strengths and weaknesses per topic.

Missing Work

All assignments, labs, and assessments must be completed. These will be posted on the Parent Portal, as well as, Google Classroom. I will be available for extra help to assist students in need. It is the responsibility of the student to make up any missed assignments within 1 or 2 days of an absence. In the event that there is an extended absence, please contact me via email.

Grading Criteria Per Marking Period

A. Assessments (Quizzes, Quests, and Exams) (60%)

Students will have assessments weekly to keep them up to date with the most recent material. Quizzes, quests, and exams will consist of Regents exam style questions (multiple choice and free response). Students should review their notes each day to keep up with the material.

B. Labs (30%)

We will do 7-10 labs in each marking period. Labs will be graded with a numerical grade and will be kept in the lab portion of the student's ES binder. 1200 minutes of laboratory activities are needed to sit for the New York State Earth Science Regents exam in June. Students need to make up missing labs due to absences before each marking period ends to obtain credit.

C. Homework & Classwork (10%)

Students are expected to complete practice questions, Edpuzzles, view Slide presentations, review notes, and study on a daily basis. Homework assignments are to be completed in a timely manner.

Students are expected to be sitting in their seats with their charged chromebooks, Earth Science Reference Table (ESRT), binders open and ready to write when the bell rings. Active participation and engagement during class discussions are encouraged. Proper effort during note taking and in-class assignments are expected.

Late assignments: Students will lose 10% of their assignment grade each day that their assignment is late. After one week, the late assignment will be recorded on the icampus portal as a 0.

Final Grade: Based on the four marking period quarters and Regents exam. Each quarter will be worth 22% of the final grade and the Regents exam will be worth 12%.

Discipline Plan

1st Transgression:	Warning
2nd Transgression:	Time after class
3rd Transgression:	Dean's detention and parent call
4th Transgression:	Office referral

I have read and understand the ES Course Requirements and Expectations.

Student signature:

Parent signature:

Farm to School
Mrs. Flanagan



Required Materials:

- 1) Old sneakers/shoes that can get dirty, to be left in school
(write name on them or put in bag with name)
- 3) Small binder, or a section in a shared binder

This course is designed to introduce you to some basic concepts related to maintaining and growing a garden for food production. Through participation in garden based activities, you will learn about the agricultural science concepts, as well as the care and management of a garden. You will explore food production, gaining an understanding as to the source of the products we consume. You will also apply the principles of sustainable organic farming practices while taking advantage of our school greenhouse, as well as local farms, grocery stores, restaurants, and other available resources. Be prepared to work hard, have lots of fun, and to get your hands dirty!

Grading Policy:

You will earn a numerical grade for this class each marking period, according to the following breakdown...

Assignments (60%)

Assignments include any activities we work on during class. They may range from written lab reports to homework assignments, and research projects to long-term experiments.

Current Topics (30%)

You will be required to complete Current Topics assignments each marking period. Detailed information will be given out in class. However, you will have different activities to choose from when completing this requirement. They will include article summaries, trip reports, personal interviews, and T.V. show summaries.

Participation (10%)

We will all be working together to make this class successful and enjoyable. Because of this, a portion of your grade will be determined by your attitude and effort during class activities.

PARENTS:

- Be sure to log on to the Parent Portal to view all upcoming major assignments and their due dates. All grades will be posted on a regular basis as well.
- Please feel free to email me at mflanag2@3villagecsd.org or call at 730-4700 with any questions or concerns you may have.

Thank you in advance for your help. I am looking forward to a great school year!

Honors Living Environment/Biology Mrs. Flanagan

Welcome back to school, students. This year we will cover a broad range of topics dealing with the living environment. Throughout the year you can expect to receive homework assignments, quizzes, laboratory activities, tests, and assorted projects to complete. You may find some quite easy to complete, while others may be more difficult. Nevertheless, all will be an important part of your learning experience.



Many assignments and activities will be completed on your Chromebook. It is your responsibility to make sure that you have your Chromebook with you in class and it is charged and ready to go. There will be many times that I ask you to use Chromebook compatible earbuds or headphones to complete an assignment. Please make sure that you always have these available with you in class.

If you miss class or an assignment for any reason, **YOU** are responsible for making it up in a timely fashion. You should see a classmate, myself, or check on Google Classroom. Assignments will be posted on Google Classroom on a daily basis (check the assignment calendar).

What should you bring to class everyday?

- 1) Three ring binder
- 2) Pen or Pencil
- 3) Scientific Calculator (can be shared with math)
- 4) Charged Chromebook
- 5) Earbuds or headphones that are compatible with Chromebook

Extra Help:

If you need help or have any questions, make sure you ask to come to extra help. I am available every day during 7th period lunch by appointment. Please make sure you see me before 7th period to ask me for a pass to leave the cafeteria after you finish eating.

Grading Policy:

This is a high school-level class, it is important to note that your overall grade will appear on your high school transcript and remain with you throughout the remainder of your school career. Your overall grade you receive in this class is dependent on the grades you receive from all four quarters and the NYS Regents Exam in June. Each marking period will make up 22% of your overall grade while your Regents grade will account for the remaining 12%.

The breakdown for each marking period is as follows...

- **Homework (10%)**
Homework consists of short independent activities which will help you to master the material we have learned in class. You should expect to have homework most nights.
- **Labs (30%)**

We will be completing many labs throughout this school year. All laboratory activities will require written reports, whether they are full lab write-ups or abbreviated versions.

- **Quizzes/Tests (60%)**

Tests and quizzes will often be a combination of multiple choice, short answer, and performance questions. They will be based on all material covered since the last test, including class discussions, homework, quizzes, and labs.

Late Work Policy Any work not submitted on time will be marked as “missing” and will count as a “zero” in your grade calculation until received. Any work due on a day you have a music lesson, or another in-school activity, must be handed in on that day or the next. Otherwise it will be marked as “missing”. Late assignments will result in a deduction of points unless there is a valid reason for the lateness.

- **Late Labs:** A lab that is turned in late will receive an automatic deduction of 10% from the score. Example. If an assignment is 10 points, the student can receive a maximum of a 9/10. If the assignment is 100 points, the students can receive a maximum of 90/100. If 5 or more days late (or turned in after the assignment has been handed back) the assignment will receive a deduction of 30%.
- **Late Homework:** A homework assignment that is not turned in by the beginning of the period that it is due will receive half credit.

Contact Information:

(631) 730-4700 or mflanag2@3villagecsd.org



Earth Science

Mr. Marotta



Welcome to Earth Science! My Name is Mr. Marotta. I will be your teacher and guide through the Earth Science curriculum. The Earth Science course is a High School Regents level course, therefore prepare for a fun, interesting and challenging year. If you stay organized and current, work hard, practice good study habits and ask questions you will meet your goals with great success.

This is your year to learn about how everything on planet Earth works! Why mountains rise up and entire oceans disappear. You will discover how much the world has changed over time and how much we don't yet know about our expanding Universe. You will come to understand how all of our weather and climates work as well.

This year we have been given an abundance of resources to help us work through this year's social distancing requirements. We will still be learning all there is to know about Earth Science however now we have a lot of new ways to learn it. Both new technologies have been added, and some of the best older hands-on science labs will be brought back.

Course Description:

The purpose of this course is to introduce the fundamental aspects of geology, oceanography, meteorology and astronomy, and to prepare students for the Regents in Earth Science. Students will explore geological concepts through lecture, hands-on and laboratory activities. This course includes topics in energy, astronomy, rocks and minerals, and surface processes. In addition to learning the Science of our planet they will likely develop a great understanding and appreciation of the Earth

Required Materials:

1 A working Chromebook (Provided by District). It is District Policy that student's participation grades will be adversely affected if a Student fails to bring a working Chromebook to class every day. Nearly all of our classwork will be on line.

2 a Multi-Subject notebook

3 Pen & Pencil

4 Earphones or Earbuds

Labs

Lab assignments must be completed according to a standard format (unless otherwise noted). They are due at the beginning of the lab period after the lab is completed, Students will lose credit for each day late and a maximum of 65% for a satisfactory report more than two weeks late. If students are legally absent for a lab activity, students must make it up within two weeks during extra-help. Graded labs are kept by the teacher in their lab folder.

Homework:

Students will be given various types of homework assignments a couple of times a week. One of the assignments may be a weekly homework assigned on Sunday (Castle Learning-online) and due on Thursday. We usually go over the assignments the day they are due and students are expected to hand them in on the date due. Students will only receive half credit for late assignments. If you are absent, you are expected to complete the work within a day.

Attendance:

Students are expected to be on time to class every day. If you are illegally absent, students will receive no credit for the activities of that day, this includes tests. Students must make up missed exams the day you return.

Grading Policy:

Per Marking period:

- Exams & Quizzes 50%
- Laboratory 30%
- Classwork * 10%
- Homework 10 %

Note: Classwork includes class participation. Unauthorized Cell Phone use during class will reduce Classwork Grade.

Final Grade: is calculated based on the four marking quarter and Regents exam. Each marking quarter will count as 22% of final average with the Regents exam counting as 12%. This final grade calculation may be modified if the Regents exam is cancelled.

Contact Information:

Mr. Marotta cmarotta@3villagecsd.org

I am looking forward to working with your child and you this year. If you have any questions or comments please do not hesitate to contact me at any time (email is the preferred way, as it gets to me faster than a message left with a secretary).

5 Simple Class Rules:

1. *Respect yourself, other students, school property, and the teacher (substitutes too) at all times.*
2. *Do not interfere with another student's right to learn.*
3. *Come to class prepared with all materials each day (including an open mind and a positive attitude).*
4. *Class begins the moment the bell rings. All students should be seated in their assigned seats, and working on the "YOYO" when the bell rings. An official pass must accompany all late arrivals.*
5. *Always follow all safety rules in the laboratory and classroom (i.e. absolutely no eating or drinking in the classroom at any time).*

***These are in addition to all school rules in the School Code of Conduct and Student-Parent Handbook**



Earth Science

Mr. Marotta



Welcome to Earth Science! My Name is Mr. Marotta. I will be your teacher and guide through the Earth Science curriculum. The Earth Science course is a High School Regents level course, therefore prepare for a fun, interesting and challenging year. If you stay organized and current, work hard, practice good study habits and ask questions you will meet your goals with great success.

This is your year to learn about how everything on planet Earth works! Why mountains rise up and entire oceans disappear. You will discover how much the world has changed over time and how much we don't yet know about our expanding Universe. You will come to understand how all of our weather and climates work as well.

This year we have been given an abundance of resources to help us work through this year's social distancing requirements. We will still be learning all there is to know about Earth Science however now we have a lot of new ways to learn it. Both new technologies have been added, and some of the best older hands-on science labs will be brought back.

Course Description:

The purpose of this course is to introduce the fundamental aspects of geology, oceanography, meteorology and astronomy, and to prepare students for the Regents in Earth Science. Students will explore geological concepts through lecture, hands-on and laboratory activities. This course includes topics in energy, astronomy, rocks and minerals, and surface processes. In addition to learning the Science of our planet they will likely develop a great understanding and appreciation of the Earth

Required Materials:

1 A working Chromebook (Provided by District). It is District Policy that student's participation grades will be adversely affected if a Student fails to bring a working Chromebook to class every day. Nearly all of our classwork will be on line.

2 a Multi-Subject notebook

3 Pen & Pencil

4 Earphones or Earbuds

Labs

Lab assignments must be completed according to a standard format (unless otherwise noted). They are due at the beginning of the lab period after the lab is completed, Students will lose credit for each day late and a maximum of 65% for a satisfactory report more than two weeks late. If students are legally absent for a lab activity, students must make it up within two weeks during extra-help. Graded labs are kept by the teacher in their lab folder.

Homework:

Students will be given various types of homework assignments a couple of times a week. One of the assignments may be a weekly homework assigned on Sunday (Castle Learning-online) and due on Thursday. We usually go over the assignments the day they are due and students are expected to hand them in on the date due. Students will only receive half credit for late assignments. If you are absent, you are expected to complete the work within a day.

Attendance:

Students are expected to be on time to class every day. If you are illegally absent, students will receive no credit for the activities of that day, this includes tests. Students must make up missed exams the day you return.

Grading Policy:

Per Marking period:

- Exams & Quizzes 60%
- Laboratory 30%
- Homework & Classwork 10 %

Note: Classwork includes class participation. Unauthorized Cell Phone use during class will reduce Classwork Grade.

Final Grade: is calculated based on the four marking quarter and Regents exam. Each marking quarter will count as 22% of final average with the Regents exam counting as 12%. This final grade calculation may be modified if the Regents exam is cancelled.

Contact Information:

Mr. Marotta cmarotta@3villagecsd.org

I am looking forward to working with your child and you this year. If you have any questions or comments please do not hesitate to contact me at any time (email is the preferred way, as it gets to me faster than a message left with a secretary).

5 Simple Class Rules:

1. *Respect yourself, other students, school property, and the teacher (substitutes too) at all times.*
2. *Do not interfere with another student's right to learn.*
3. *Come to class prepared with all materials each day (including an open mind and a positive attitude).*
4. *Class begins the moment the bell rings. All students should be seated in their assigned seats, and working on the "YOYO" when the bell rings. An official pass must accompany all late arrivals.*
5. *Always follow all safety rules in the laboratory and classroom (i.e. absolutely no eating or drinking in the classroom at any time).*

***These are in addition to all school rules in the School Code of Conduct and Student-Parent Handbook**



Science Research Mr. Marotta

Welcome to Research! My Name is Mr. Marotta. I will be your teacher and guide through your Research curriculum. Research 2 is a rigorous and engaging High School Level Class, therefore, prepare for a fun, interesting and challenging year. In Research 2 you will learn what it takes to produce real life Scientific Knowledge. Good work and research experience will prepare you for great success in the scientific community.

This year we have been given an abundance of resources to help us conduct research within the social distancing requirements. We will still be learning all there is to know about scientific innovation, however now we have a lot of new ways to learn it. You may also be encouraged to enter a Scientific Competition during the course.

Course Description:

This is a non-traditional program that involves many activities not measurable by the standard methods for assessing students' performance. As a result, grading is based on your effort and performance on assigned projects, timely submission of required papers and

projects, participation in class discussions and projects, and maintenance of your research journal.

A research journal will be introduced in the first marking period and is to be kept throughout the program, which will be periodically reviewed and graded. As a scientist, it is important to document your ideas, list important articles you have read, data you have collected, searches for mentors, and specific projects. The journal is intended to help you develop this habit, as well as provide you with reminders of things you have found interesting and might like to investigate later on in your scientific career.

We fully realize some research endeavors may not prove fruitful (ex: it didn't work); this is not an unusual event in scientific investigation. Evaluation of your performance will not be based on whether a project was successful, but rather on the amount of effort and thought you put into the project.

Note that each assignment will be weighted according to its difficulty and time involved to compute your quarterly grade. Work that is turned in late will receive a grade of 0 (zero), unless there are extenuating circumstances. Work that is done poorly, or not fulfilling specified requirements, will be penalized accordingly and needs to be redone properly.

Required Materials:

1 A working Chromebook (Provided by District). It is District Policy that student's participation grades will be adversely affected if a Student fails to bring a working Chromebook to class every day. Nearly all of our classwork will be on line.

3 Pen & Pencil

4 A scientific journal with numbered pages. (a "salt and pepper" notebook with pages numbered is acceptable as your scientific journal).

Labs

During each Quarter you will be asked to perform some original research. Much of this may be done on your own in support of your Research Papers. Your lab grade will be based upon your completion of your research conducted using the Scientific Method to support your project.

Homework:

Students will be given various types of homework assignments a couple of times a week. One of the assignments will be a weekly homework assigned on Sunday (Castle Learning-online) and due on Thursday. We usually go over the assignments the day they are due and students are expected to hand them in on the date due. Students will only receive half credit for late assignments. If you are absent, you are expected to complete the work within a day.

Attendance:

Students are expected to be on time to class every day. If you are illegally absent, students will receive no credit for the activities of that day, this includes tests. Students must make up missed exams the day you return.

Grading Policy:

Per Marking period:

•	Quarterly Research Paper	40%
•	Laboratory work/Research	20%
•	Classwork	20%
•	Homework	20 %

Final Grade:

4 Marking Periods

Contact Information:

Mr. Marotta cmarotta@3villagecsd.k12.ny.us

I am looking forward to working with your child and you this year. If you have any questions or comments please do not hesitate to contact me at any time (email is the preferred way, as it gets to me faster than a message left with a secretary).

5 Simple Class Rules:

1. *Respect yourself, other students, school property, and the teacher (substitutes too) at all times.*
2. *Do not interfere with another student's right to learn.*
3. *Come to class prepared with all materials each day (including an open mind and a positive attitude).*
4. *Class begins the moment the bell rings. All students should be seated in their assigned seats, and working on the "YOYO" when the bell rings. An official pass must accompany all late arrivals.*
5. *Always follow all safety rules in the laboratory and classroom (i.e. absolutely no eating or drinking in the classroom at any time).*

These are in addition to all school rules in the School Code of Conduct and Student-Parent Handbook

Print Student Name _____

By signing below, I assert that I have read the material in the following pages and am aware of our class expectations and guidelines.

Student Signature _____

Parent Signature _____

Earth Science Expectations and Guidelines

Mr. Mutter

GOALS

- To gain an understanding and appreciation of our dynamic Earth - its features, the forces that affect it, and its place in the universe.
- To develop skills used in science through laboratory and field experiences.

STUDENT EXPECTATIONS

- Choose to succeed!
- Always be prepared for class with appropriate materials (see below).
- Ask appropriate questions and come to extra help when needed.
- Complete all assignments to the best of your ability and hand them in **ON TIME**.
- To foster an environment in which learning is the primary focus, the use of personal electronic devices (phones, etc.) in class will be strictly limited. Unless explicitly permitted by the teacher, all devices, other than district issued Chromebooks, must be made silent and stored out of sight.
- Students will access G-Suite for Education through their Three Village Central School District issued credentials. This allows the student to move independently to Google Classroom.
- Remote students will arrive on-time for Google Meet sessions using their district issued Chromebook and are expected to participate in all academic activities facilitated by the teacher.
- In-person students are required to bring their Chromebook, **fully charged**, to class each day. **Charging may not be available in class.**
- Google Meet sessions may not be recorded.
- Students will abide by the policies and procedures outlined in the [Chromebook User Agreement](#).



MATERIALS

- slim, 3 ring binder or folder
- loose leaf paper
- pen, pencil & colored pencils
- calculator (basic 4 function, not a phone)
- Chromebook (**charged**) *
- earbuds for Chromebook
- stylus for Chromebook (optional)
- *Earth Science Reference Tables...oohaha! **



* Indicates items provided by the Three Village Central School District

LAB POLICY

- A report must be submitted for each lab activity.
- Labs must be returned to the teacher to keep on file.
- Unsatisfactory or Incomplete labs will not be accepted towards the Regents requirement.
- As per New York State Department of Education requirements, students must have successfully completed a minimum of 20 laboratory hours with corresponding reports being submitted by the end of May. Students who do not satisfy this requirement are **not eligible** for admission to the NYS Earth Science Regents Examination in June.

MONITORING STUDENT PERFORMANCE

- Earth Science can be a very challenging subject for many students. Success often requires concerted support from both home and school. The District provides a method for parents to view students' grades on-line. By clicking on the "Parent Portal" link on the District's website (3villagecsd.org), parents can view Earth Science grades for individual assignments and the quarter average as well as see assignments marked as missing or incomplete. Please note that a lag time of a few days is common between an assignment's due date and the grade being visible on the Portal. Assignments and dates are subject to change, as necessary. Please email me if you have any questions or concerns at dmutter@3villagecsd.org.
- Each topic in Earth Science will be accompanied by readings, notes, slide presentations, videos, lab activities, and practice questions. These resources will primarily be distributed digitally via Google Classroom or Google Sites. Parents may check Google Classroom to view student work.
- The District subscribes to educational websites that provides students with practice questions. Students will be assigned teacher-designed question sessions that will be graded online. Students may also design their own question sessions for additional practice. Parents can monitor student progress on these sites by visiting clever.com, and signing in with their Google account or through the website directly, entering the student's username and password, and clicking on completed assignments. Other features allow parents to track student progress over the school year as well as identify student strengths and weaknesses.
- Four report cards will be posted on the Parent Portal over the course of the year.

WORK MISSED DUE TO ABSENCE

- It is the responsibility of the student to obtain and make up all missed work including absences for extracurricular activities and field trips. Students may be required to make up missed work outside of our regular class time, particularly laboratory assignments and tests.
- Work must be made up within a reasonable period of time.

GRADING CRITERIA

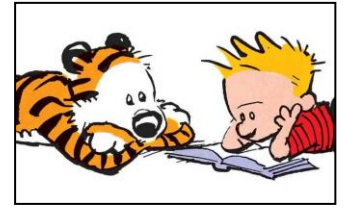
Tests (60%)

- Consist of Regents exam style questions (multiple choice parts and/or free response) and will be taken on paper or using the Chromebooks.
- Quizzes may be given with little warning and consist of the most recent material. Be prepared and keep up with the work!
- Some assessments will be assigned online for homework.
- As part of an honors level course, students will be expected to complete tasks on assessments that are higher order and beyond the NYS curriculum.



Labs (30%)

- All lab reports must be completed and turned-in to be kept on file.
- We will do 7-10 labs in each of the first 3 quarters.
- Labs will be graded with a number grade and/or with a lab test.
- Unexcused late labs must be turned in for Regents credit and will receive a grade penalty.
- Unsatisfactory or incomplete labs will not receive Regents credit.
- As part of an honors level course, students must complete various activities which seek to enhance the learning experience and challenge students beyond the NYS curriculum. This includes more complex lab assignments.



Classwork/Homework (10%)

- Students are expected to be prepared to work with all necessary materials soon after the bell rings to start class. This includes a charged Chromebook (with charger to recharge when opportunities are available), proper programs/files open on computer screen, pen/pencil, binder/folder with loose-leaf paper, and ESRT...oohaha!
- Students are expected to show the proper effort needed on in-class assignments.
- Students are expected to participate in class discussions & ask questions (as necessary).
- Students are expected to complete classwork consistent with their ability & course level.
- Class assignments may be evaluated through in-class monitoring, sets of brief review materials or may be turned-in.
- As part of an honors level course, students must complete various assignments which seek to enhance the learning experience and challenge students beyond the NYS curriculum.
- Assigned regularly and includes reading, reviewing notes, completing practice materials and questions, viewing videos or slide presentations, completing labs, and studying. Students should spend a minimum of 20 minutes per day outside of class working on science (even if no “written” work is assigned).
- Due at the beginning of class and will not be accepted late if reviewed or answer key posted.
- As part of an honors level course, students must complete various assignments which seek to enhance the learning experience and challenge students beyond the NYS curriculum. This includes current event articles with write-ups.

Composite Course Grade: Each quarter grade x 22% = 88%; Final Exam = 12%

Earth Science is a credit bearing course. The composite course grade and the NYS Regents Examination grade will be recorded on the student’s high school transcript.

MIDYEAR AND FINAL ASSESSMENTS

- A Midyear exam and the NYS Earth Science Regents Examination in June.

EXTRA HELP – by appointment, either for in-person or remote. Our online resources offer many helpful materials, such as additional reading, video tutorials, etc. Please check regularly for updates.



Print Student Name _____

By signing below, I assert that I have read the material in the following pages and am aware of our class expectations and guidelines.

Student Signature _____

Parent Signature _____

Earth Science Expectations and Guidelines

Mr. Mutter

GOALS

- To gain an understanding and appreciation of our dynamic Earth - its features, the forces that affect it, and its place in the universe.
- To develop skills used in science through laboratory and field experiences.

STUDENT EXPECTATIONS

- Choose to succeed!
- Always be prepared for class with appropriate materials (see below).
- Ask appropriate questions and come to extra help when needed.
- Complete all assignments to the best of your ability and hand them in **ON TIME**.
- To foster an environment in which learning is the primary focus, the use of personal electronic devices (phones, etc.) in class will be strictly limited. Unless explicitly permitted by the teacher, all devices, other than district issued Chromebooks, must be made silent and stored out of sight.
- Students will access G-Suite for Education through their Three Village Central School District issued credentials. This allows the student to move independently to Google Classroom.
- Remote students will arrive on-time for Google Meet sessions using their district issued Chromebook and are expected to participate in all academic activities facilitated by the teacher.
- In-person students are required to bring their Chromebook, **fully charged**, to class each day. **Charging may not be available in class.**
- Google Meet lessons may not be recorded.
- Students will abide by the policies and procedures outlined in the [Chromebook User Agreement](#).



MATERIALS

- slim, 3 ring binder or folder
- loose leaf paper
- pen, pencil & colored pencils
- calculator (basic 4 function, not a phone)
- Chromebook (**charged**) *
- earbuds for Chromebook
- stylus for Chromebook (optional)
- *Earth Science Reference Tables...oohaha! **



* Items provided by the Three Village Central School District

ASSIGNMENTS

- Include class work and activities, laboratory investigations, and homework.
- Homework will be assigned regularly. Students should spend a minimum of 20 minutes per day outside of class working on science (even if no “written” work is assigned).

LAB POLICY

- A report must be submitted for each lab activity.
- Labs must be returned to the teacher to keep on file.
- Unsatisfactory or Incomplete labs will not be accepted towards the Regents requirement.
- As per New York State Department of Education requirements, students must have successfully completed a minimum of 20 laboratory hours with corresponding reports being submitted by the end of May. Students who do not satisfy this requirement are **not eligible** for admission to the NYS Earth Science Regents Examination in June.

MONITORING STUDENT PERFORMANCE

- Earth Science can be a very challenging subject for many students. Success often requires concerted support from both home and school. The District provides a method for parents to view students’ grades on-line. By clicking on the “Parent Portal” link on the District’s website (3villagecsd.org), parents can view Earth Science grades for individual assignments and the quarter average as well as see assignments marked as missing or incomplete. Please note that a lag time of a few days is common between an assignment’s due date and the grade being visible on the Portal. Assignments and dates are subject to change, as necessary. Please email me if you have any questions or concerns at dmutter@3villagecsd.org.
- Each topic in Earth Science will be accompanied by readings, notes, slide presentations, videos, lab activities, and practice questions. These resources will primarily be distributed digitally via Google Classroom or Google Sites. Parents may check Google Classroom to view student work.
- The District subscribes to educational websites that provides students with practice questions. Students will be assigned teacher-designed question sessions that will be graded online. Students may also design their own question sessions for additional practice. Parents can monitor student progress on these sites by visiting clever.com, and signing in with their Google account or through the website directly, entering the student’s username and password, and clicking on completed assignments. Other features allow parents to track student progress over the school year as well as identify student strengths and weaknesses.
- Four report cards will be posted on the Parent Portal over the course of the year.

WORK MISSED DUE TO ABSENCE

- It is the responsibility of the student to obtain and make up all missed work including absences for extracurricular activities and field trips. Students may be required to make up missed work outside of our regular class time, particularly laboratory assignments and tests.
- Work must be made up within a reasonable period of time.



GRADING CRITERIA

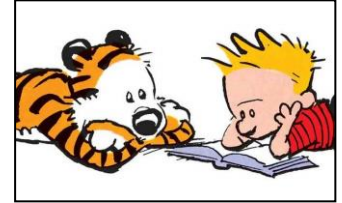
Tests (60%)

- Consist of Regents exam style questions (multiple choice parts and/or free response) and will be taken on paper or using the Chromebooks.
- Quizzes may be given with little warning and consist of the most recent material. Be prepared and keep up with the work!

- Some assessments will be assigned online for homework.

Labs (30%)

- All lab reports must be completed and turned-in to be kept on file.
- We will do 7-10 labs in each of the first 3 quarters.
- Labs will be graded with a number grade and/or with a lab test.
- Unexcused late labs must be turned in for Regents credit and will receive a grade penalty.
- Unsatisfactory or incomplete labs will not receive Regents credit.



Classwork/Homework (10%)

- Students are expected to be prepared to work with all necessary materials soon after the bell rings to start class. This includes a charged Chromebook (with charger to recharge when opportunities are available), proper programs/files open on computer screen, pen/pencil, binder/folder with loose-leaf paper, and ESRT...oohaha!
- Students are expected to show the proper effort needed on in-class assignments.
- Students are expected to participate in class discussions & ask questions (as necessary).
- Students are expected to complete classwork consistent with their ability & course level.
- Class assignments may be evaluated by in-class monitoring, a set of brief review questions or turned in.
- Will be assigned regularly and includes reviewing notes, completing practice materials and questions, reading, viewing videos or slide presentations, completing labs, and studying.
- Due at the beginning of class and will not be accepted late if reviewed or answer key posted.

Composite Course Grade: Each quarter grade x 22% = 88%; Final Exam = 12%

Earth Science is a credit bearing course. The composite course grade and the NYS Regents Examination grade will be recorded on the student's high school transcript.

MIDYEAR AND FINAL ASSESSMENTS

- A Midyear exam and the NYS Earth Science Regents Examination in June.

EXTRA HELP – by appointment, either for in person or remote. Our online resources offer many helpful materials, such as additional reading, video tutorials, etc. Please check regularly for updates.



Living Environment/Biology Honors 2021-2022

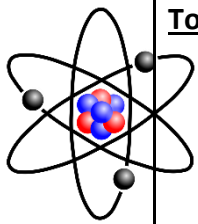
Ms. Schaefer



Contact Information

Teacher	Email	Room	Google Classroom Code
Ms. Schaefer	aschaefer@3villagecsd.org	209	_____

Course Overview and Materials



Topics Covered

- Intro to Biology
- Ecology
- Cells/Cell Processes
- Biochemistry
- Genetics
- Evolution
- Classification
- Human Body Systems

Materials

- **CHARGED** Chromebook - may not be in use every class, but it is required and expected that it is in class and charged each and every day
- Separate section in a shared 3-ring binder
- Pocket folder
- **Sharpened** pencils and pens
- Earbuds or headphones (compatible with chromebook)
- Non-programmable Calculator (shared with math)
- Colored pencils **or** crayons



Class Expectations

- **Respect** and consideration are expected between every person in the classroom.
- Follow **all** class rules
- Arrive **on time** to class and be prepared to work at the bell.
- Bring all required **materials** to class daily, including charged chromebook, headphones and writing utensils
- Follow the Student Code of Conduct. If there are issues with attendance, behavior, classwork, etc., I will contact home.
- The use of **cell phones** and **ipods** is prohibited unless given permission for learning purposes only. The first violation will result in a verbal warning, if use continues, they will be sent to your grade level administrator.
- **Masks** and proper **sanitation practices** are required during in-person learning.
 - I will provide mask breaks during each class period if you choose to take one.
- **Food** will **not** be allowed in the classroom under any circumstances.

Grading Policy

Because this is a high school-level class, it is important to note that your overall grade will appear on your high school transcript and remain with you throughout the remainder of your school career. Your grade for this class will be comprised of each of the four marking period grades you receive, as well as your Regents exam grade. **Each** marking period will make up **22% of your overall grade** while your **Regents exam** grade will account for the remaining **12%**.

Note: Information in this document is subject to change.
You will be notified on Google Classroom of any changes.

Ms. Schaefer 2021-2022

The breakdown for each marking period is as follows:

- **Assessments 60%**
 - Assessments will consist of quizzes, tests and occasional projects. These will be based on the material covered during each unit, including do-now's/exit tickets, class work or discussions, homework, quizzes, and labs.

- **Labs 30%**
 - New York State mandates that every student must complete **1200 laboratory minutes**. We will meet this requirement by participating in a wide variety of virtual and hands-on lab work throughout the year. If this number is not met, you will not be permitted to take the Regents exam in June
 - **YOU** will be responsible for maintaining a lab folder in the classroom that contains a record of all the labs you have done during the school year. Labs will be handed back for review but **must** be filed in your lab folder and may not be taken home.

- **Homework/Participation/Preparedness 10%**
 - Homework consists of short independent activities which will help you to master the material we have learned in class.
 - Homework is not assigned every day but when it is, it is expected to be completed.
 - Bringing a charged Chromebook to class each day is part of **participation/preparedness**
 - This grade will be calculated as follows:
 - No Chromebook- (-2pts) w/o acceptable excuse.
 - Chromebook not charged - (-1pt) w/o acceptable excuse
 - Visiting other sites not related during class- (-2pts) (Videos, Games, etc.)
 - ***Note:** chromebooks may not be used in every class but in the event that they are needed you must have them charged and in class.



Cheating and Plagiarism will not be tolerated:

Students caught cheating will receive a zero for the assignment. This includes but is not limited to: copying from textbook, internet or classmates; use of hand held electronic devices; having any material at your desk during quizzes/tests; talking to anyone about anything during quizzes/tests.

Accessing Grades

- You can **access your grades and average on Infinite Campus**.
- All blank assignments are returned with a **zero**.

Absent Policy

If you miss class or an assignment for any reason **YOU** are responsible for making it up in a timely fashion. In the event of an absence, you should check the **absent folder/bin** for the material containing your name. If the assignment cannot be made up at home please see me to schedule a time to complete it. All assignments will be posted on Google Classroom on a daily basis (make sure to check the calendar posted to Google Classroom).

Tests/Quizzes- If you are absent on the day quiz or exam is administered, you must be prepared for the quiz or exam on the day you return. If you are absent **only** the day before a quiz/exam, you will not be excused and will be expected to take the quiz/exam unless there is a valid excuse.

Late Work Policy

Any work **not** submitted on time will be marked as “missing” and will count as a “zero” in your grade calculation until received. Any work due on a day you have a music lesson, or another in-school activity, must be handed in on that day or the next. Otherwise it will be marked as “missing”. **Late** assignments will result in a deduction of points unless there is a valid reason for the lateness.

Late Labs:

- A lab that is turned in **late** will receive an **automatic deduction of 10%** from the score. Example. If an assignment is 10 points, the student can receive a maximum of a 9/10. If the assignment is 100 points, the students can receive a maximum of 90/100.
- If 5 or more days late (or turned in after the assignment has been handed back) the assignment will receive a **deduction of 30%**.

Late Homework:

- A homework assignment that is not turned in by the beginning of the period that it is due will receive **half credit**

Extra Help

If you need help, or have any questions, please ask to come to extra help. As I will be teaching at both P.J. Gelinas JHS and Ward Melville HS, extra help will be available during your 7th period lunch or after school **by appointment**. If you would like to come to extra help for lunch, please make sure to ask for a lunch pass before your lunch period.

Parent/Guardian Form (*signature required)

By signing this form, you acknowledge that you have read, understand, and agree to the classroom expectations and policies. You may [email me](#) if you have any questions or concerns throughout the school year.

****Parents/Guardians complete this Google Form****



Parents and Students: By signing below, I state that I understand all of the Earth Science course requirements, lab policy, and rules for the class.

Print Student Name _____

Student Signature _____

Parent/Guardian Signature _____



GELINAS JUNIOR HIGH SCHOOL

COURSE REQUIREMENTS & EXPECTATIONS



EARTH SCIENCE HONORS - MR. SCHUCHMAN

(pschuchm@3villagecsd.org)

Course Objective:

The purpose of this course is to introduce students to the study of Earth Science and to develop critical thinking and laboratory skills. This course will discuss topics such as deep space astronomy, mapping, Earth motions in space, insolation, weather, the water cycle, erosional and depositional processes, rock formation, the Earth's crust, geologic history, landscape formation and more. Earth Science is a high school course and will appear on the students' Ward Meville transcript. The overall course grade is based on the four quarters (22% each) and the Regents Exam grade (12%). In the event that the Regents Exam is canceled, the overall course grade will be the average of the four quarter grades. **Honors students must maintain a 90% average in the course.**

The course is based on the 2000 New York State Regents Earth Science curriculum. *A minimum of 1200 minutes (20 hours) of laboratory investigations must be satisfactorily completed* in order to take the June Earth Science Regents exam. Students that do not meet the State lab requirement will not be permitted to take the Regents exam.

Materials Needed For Class:

3-Ring Binder	#2 pencils
Loose leaf paper (approx. 20 sheets)	Colored pencils (red orange yellow green blue brown)
Pen (blue or black ink only)	Stylus for Chromebook
Ear buds	Charged Chromebook & Charger

Resources Supplied by School:

Earth Science Digital Review Book
Earth Science Reference Tables
Chromebook & charger

Student Expectations in Class:

- A. Follow class rules.
 1. Always be prepared for class (bring folder/binder, Chromebook & charger).
 2. Be ready to work when the bell rings.
 3. Raise hand and wait to be recognized before speaking.
 4. Follow directions carefully especially during lab sessions.
 5. Respect other students, the teacher, school equipment and yourself (use appropriate language and behavior).

Note: Information in this document is subject to change.
You will be notified on Google Classroom of any changes.

- B. Ask questions, that is what science is all about.
- C. Always complete assignments to the best of your ability. Seek extra help if needed.
- D. No eating or drinking in class unless permitted for a specific reason.
- E. The use of unauthorized electronic devices (i.e. recording devices, cell phones, smart phones, and cameras) are not permitted during class time and during any testing, unless specifically directed by teachers. The use of recording devices, of any kind, is not permitted on school property and District transportation.

Monitoring Student Performance:

- A. The District provides a method for parents to view students' grades on-line. By clicking on the "Parent Portal" link on the District's website (3villagecsd.org), parents can view Earth Science grades for individual assignments and quarter average as well as see assignments marked as missing or incomplete. Parents should try to visit the "Parent Portal" at the end of every week. Please note that a lag time of a few days is common between an assignment's due date and the grade being visible on the Portal. Please email me if you have any questions or concerns at pschuchm@3villagecsd.org. Earth Science is a very challenging subject and success requires concerted support from both home and school.
- B. Each topic in Earth Science will be accompanied by notes, review book reading, slide presentations, videos, lab activities, and practice questions. These resources will primarily be distributed digitally via Google Classroom. Parents should occasionally check Google Classroom to view student work.
- C. The District subscribes to an educational website (www.castlelearning.com) that provides students with practice questions. Students will be assigned teacher-designed question sessions that will be graded online. Students can also design their own question sessions for additional practice. Parents can monitor student progress by visiting the website, entering the student's username and password, and clicking on completed assignments. Other features allow parents to track student progress over the school year as well as identify student strengths and weaknesses.
- D. Four report cards will be posted on the Parent Portal over the course of the year.

Work Missed Due to Absence

- A. All assignments, labs, quizzes and tests must be made up. These materials will be posted on Google Classroom. Contact the teacher to set up a time for an extra help session.
- B. It is the responsibility of the student to gather and complete all work that was missed due to absence.
- C. Normally, students are expected to be caught up with work within 1 or 2 days of an absence.
- D. In the case of an extended absence, please contact the teacher to establish a timeline of due dates.

Grading Criteria

A. Assessments (50%)

1. All tests will be announced a minimum of three days in advance. This provides the students with adequate time to study, review and seek extra help.
2. Tests will consist of Regents exam-style questions.
3. There will be 2-3 topic tests each quarter.
4. A midterm exam will be given at the end of the 2nd quarter which will be weighted as 20% of the quarter grade (modifications will be made).
5. Quiz questions will vary in style to allow for a variety of responses including free response, multiple choice, demonstration of lab skills, diagramming and calculation.
6. Most quizzes will be announced a minimum of one day in advance.

B. Labs (30%)

1. Multiple lab activities will be integrated into each topic.
2. Labs must be completed and submitted for a grade within the quarter that the lab was assigned in order to receive credit (the final date of lab submission for each quarter will be provided by the teacher). Only labs assigned to the class at large may be submitted for credit (no individualized make-up labs will be assigned).
3. In order to take the Earth Science Regents exam, a minimum of 20 lab hours must be satisfactorily completed. Parents will be contacted if a student is in danger of not meeting the State lab requirement.

C. Homework & Classwork (10%)

1. Homework will be assigned approximately two to three times each week, this includes reviewing notes, completing work sheets, reading, answering practice questions, viewing videos or slide presentations, completing labs, and studying.
2. Students are expected to be prepared to work with all necessary materials soon after the bell rings to start class. This includes a charged Chromebook (with charger), proper programs/files open on computer screen, ESRT, pen/pencil, & folder with loose-leaf paper.
3. Students are expected to show the proper effort needed on in-class assignments.
4. Students are expected to participate in class discussions & ask questions (as necessary).
5. Students are expected to complete classwork consistent with their ability & course level.

- * **Extra help** will be available in-person during student lunch periods. Students must contact the teacher to arrange a time for the extra help session.

** Additional Honors Enrichment Activities

- Students enrolled in honors level Earth Science will complete various enrichment activities which enhance the learning experience and challenge students beyond NYS curriculum
- This enriched work will be assessed through honors level classwork, labs, and exams
- In addition, students are strongly encouraged to take part in other science competitions offered at school or through professional organizations

Late Work Policy

Any work **not** submitted on time will be marked as “missing” and will count as a “zero” in your grade calculation until received. Any work due on a day you have a music lesson, or another in-school activity, must be handed in on that day or the next. Otherwise it will be marked as “missing”. **Late** assignments will result in a deduction of points unless there is a valid reason for the lateness.

Late Labs:

- A lab that is turned in **late** will receive an **automatic deduction of 10%** from the score. Example. If an assignment is 10 points, the student can receive a maximum of a 9/10. If the assignment is 100 points, the students can receive a maximum of 90/100.
- If 5 or more days late (or turned in after the assignment has been handed back) the assignment will receive a **deduction of 30%**.

Late Homework:

- A homework assignment that is not turned in by the beginning of the period that it is due will receive **half credit**

Extra help will be available in-person in room 222 during student lunch periods. Students must contact the teacher to arrange a time for the extra help session. Speak to me in class or email me to make arrangements (pschuchm@3villagecsd.org)

Discipline Plan

First transgression:

Second transgression:

Third transgression:

Severe or repeated problems:

Warning

Time after class and/or alternative work

Dean's detention and parent call

Office referral and parent call



**** Using KAMI - Parents and Students:** By signing below, I state that I understand all of the Earth Science course requirements, lab policy, and rules for the class.

Print Student Name _____
(*print in black using Kami*)

Student Signature _____
(*sign in blue using Kami*)

Parent/Guardian Signature _____
(*sign in red using Kami*)



GELINAS JUNIOR HIGH SCHOOL



COURSE REQUIREMENTS & EXPECTATIONS

EARTH SCIENCE REGENTS - MR. SCHUCHMAN

(pschuchm@3villagecsd.org)

Course Objective:

The purpose of this course is to introduce students to the study of Earth Science and to develop critical thinking and laboratory skills. This course will discuss topics such as deep space astronomy, mapping, Earth motions in space, insolation, weather, the water cycle, erosional and depositional processes, rock formation, the Earth's crust, geologic history, landscape formation and more. Earth Science is a high school course and will appear on the students' Ward Meville transcript. The overall course grade is based on the four quarters (22% each) and the Regents Exam grade (12%). In the event that the Regents Exam is canceled, the overall course grade will be the average of the four quarter grades.

The course is based on the 2000 New York State Regents Earth Science curriculum. A *minimum of 1200 minutes (20 hours) of laboratory investigations must be satisfactorily completed* in order to take the June Earth Science Regents exam. Students that do not meet the State lab requirement will not be permitted to take the Regents exam.

Materials Needed For Class:

3-ring Binder (may be shared)
Loose leaf paper (approx. 20 sheets)
Pen (blue or black ink only)
Ear buds

#2 pencils
Colored pencils (red orange yellow green blue brown)
Stylus for Chromebook
Charged Chromebook & Charger

Resources Supplied by School:

Earth Science Digital Review Book
Earth Science Reference Tables
Chromebook & charger

Student Expectations in Class:

- A. Follow class rules.
 1. Always be prepared for class (bring folder/binder, Chromebook & charger).
 2. Be ready to work when the bell rings.
 3. Raise hand and wait to be recognized before speaking.
 4. Follow directions carefully especially during lab sessions.
 5. Respect other students, the teacher, school equipment and yourself (use appropriate language and behavior).

Note: Information in this document is subject to change.
You will be notified on Google Classroom of any changes.

- B. Ask questions, that is what science is all about.
- C. Always complete assignments to the best of your ability. Seek extra help if needed.
- D. No eating or drinking in class unless permitted for a specific reason.
- E. The use of unauthorized electronic devices (i.e. recording devices, cell phones, smart phones, and cameras) are not permitted during class time and during any testing, unless specifically directed by teachers. The use of recording devices, of any kind, is not permitted on school property and District transportation.

Monitoring Student Performance:

- A. The District provides a method for parents to view students' grades on-line. By clicking on the "Parent Portal" link on the District's website (threevillagecsd.org), parents can view Earth Science grades for individual assignments and quarter average as well as see assignments marked as missing or incomplete. Parents should try to visit the "Parent Portal" at the end of every week. Please note that a lag time of a few days is common between an assignment's due date and the grade being visible on the Portal. Please email me if you have any questions or concerns at pschuchm@3villagecsd.org. Earth Science is a very challenging subject and success requires concerted support from both home and school.
- B. Each topic in Earth Science will be accompanied by notes, review book reading, slide presentations, videos, lab activities, and practice questions. These resources will primarily be distributed digitally via Google Classroom. Parents should occasionally check Google Classroom to view student work.
- C. The District subscribes to an educational website (www.castlelearning.com) that provides students with practice questions. Students will be assigned teacher-designed question sessions that will be graded online. Students can also design their own question sessions for additional practice. Parents can monitor student progress by visiting the website, entering the student's username and password, and clicking on completed assignments. Other features allow parents to track student progress over the school year as well as identify student strengths and weaknesses.
- D. Four report cards will be posted on the Parent Portal over the course of the year.

Work Missed Due to Absence

- A. All assignments, labs, quizzes and tests must be made up. These materials will be posted on Google Classroom. Contact the teacher to set up a time for an extra help session.
- B. It is the responsibility of the student to gather and complete all work that was missed due to absence.
- C. Normally, students are expected to be caught up with work within 1 or 2 days of an absence.
- D. In the case of an extended absence, please contact the teacher to establish a timeline of due dates.

Grading Criteria

A. Exams (Quizzes/Tests) (50%)

1. All tests will be announced a minimum of three days in advance. This provides the students with adequate time to study, review and seek extra help.
2. Tests will consist of Regents exam-style questions and will be taken using the Chromebooks. Quiz format can vary and may be based on laboratory experiences.
3. There will be 2-3 topic tests each quarter.
4. A midterm exam will be given at the end of the 2nd quarter which will be weighted as 20% of the quarter grade (modifications will be made).

B. Labs (30%)

1. Multiple lab activities will be integrated into each topic.
2. Labs must be completed and submitted for a grade within the quarter that the lab was assigned in order to receive credit (the final date of lab submission for each quarter will be provided by the teacher). Only labs assigned to the class at large may be submitted for credit (no individualized make-up labs will be assigned).
3. In order to take the Earth Science Regents exam, a minimum of 20 lab hours (1200 minutes) must be satisfactorily completed. Parents will be contacted if a student is in danger of not meeting the State lab requirement.

C. Homework & Classwork (10%)

1. Homework will be assigned approximately two to three times each week, this includes reviewing notes, completing work sheets, reading, answering practice questions, viewing videos or slide presentations, completing labs, and studying.
2. Students are expected to be prepared to work with all necessary materials soon after the bell rings to start class (binder; charged chromebook; ESRT; pen/pencil; calculator).
3. Students are expected to show the proper effort needed on in-class assignments.
4. Students are expected to participate in class discussions & ask questions (as necessary).
5. Students are expected to complete classwork consistent with their ability & course level.

Late Work Policy

Any work **not** submitted on time will be marked as “missing” and will count as a “zero” in your grade calculation until received. Any work due on a day you have a music lesson, or another in-school activity, must be handed in on that day or the next. Otherwise it will be marked as “missing”. **Late** assignments will result in a deduction of points unless there is a valid reason for the lateness.

Late Labs:

- A lab that is turned in **late** will receive an **automatic deduction of 10%** from the score. Example. If an assignment is 10 points, the student can receive a maximum of a 9/10. If the assignment is 100 points, the students can receive a maximum of 90/100.
- If 5 or more days late (or turned in after the assignment has been handed back) the assignment will receive a **deduction of 30%**.

Late Homework:

- A homework assignment that is not turned in by the beginning of the period that it is due will receive **half credit**

Extra help will be available in-person in room 222 during student lunch periods. Students must contact the teacher to arrange a time for the extra help session. Speak to me in class or email me to make arrangements (pschuchm@3villagecsd.org)

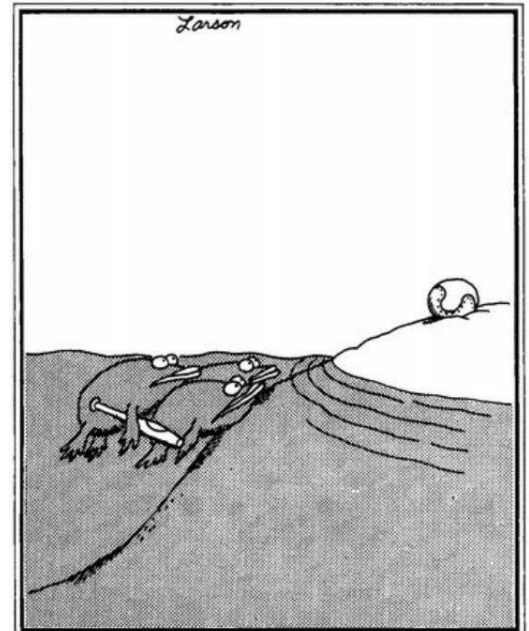
Discipline Plan

First transgression:	<i>Warning</i>
Second transgression:	<i>Time after class and/or alternative work</i>
Third transgression:	<i>Dean's detention and parent call</i>
Severe or repeated problems:	<i>Office referral and parent call</i>



Living Environment (Honors), 2021-22
Period X
Mr. Stiegelmaier

Enrollment Code:
Varies by class



Great moments in evolution

Course Overview and Required Materials:

Topics Covered:

- Intro to Biology
- Ecology
- Cells/Cell Processes
- Biochemistry
- Genetics
- Evolution
- Classification
- Body Systems

Materials:

- section in shared 3-ring binder
- pens or pencils
- charged chromebook
- scientific calculator
- earbuds that are compatible with your chromebook

Grading Policy:

Throughout the year you can expect to receive homework assignments, quizzes, laboratory activities, tests, and assorted projects to complete. You may find some quite easy to complete, while others may be more difficult. Nevertheless, all will be an important part of your learning experience. And, because they are so important, any assignment deemed unsatisfactory will be immediately returned for improvement, accompanied by a reduction in points.

If you miss a class or an assignment for any reason, **YOU** are responsible for making it up in a timely fashion. You should see a classmate, myself, or check in the **Black Box**. The previous week's work will be in it for you to take. Most work will also be posted on our Google Classroom page.

Any work not turned in on time will be marked as "**Missing**" and will calculate as a "zero" in your overall grade. The "Missing" does mean that you have the opportunity to make up that assignment though. This should be done as soon as possible to minimize the points lost. Likewise, any work due on a day you are absent, have a music lesson, or are attending another in-school activity must be handed in on that day or the next. Otherwise it, too, will be marked as "Missing."

Keep in mind, some assignments will be submitted directly on our Google Classroom page. So, you must remember to hit the "Turn In" button in order to receive credit. Forgetting to "turn in" completed work will be viewed the same as not completing the work on time. The same will hold true for submitting blank work on Google Classroom.

A lab that is turned in **late** will receive an **automatic deduction of 5%** for every day it is late. A homework assignment that is not turned in by the beginning of the period that it is due will receive **half credit**

Grade Calculations:

Because this is a high school-level class, it is important to note that your overall grade in it will appear on your high school transcript and remain with you throughout the remainder of your school career. This grade will be comprised of each of the four marking period grades you receive, as well as your Regents exam grade. Each marking period will make up 22% of your overall grade while your Regents grade will account for the remaining 12%.

The breakdown for each marking period is as follows...

Homework / Preparedness (10%)

Homework consists of short independent activities which will help you to master the material we have learned in class. You should expect to have homework most nights. I will make sure every homework assignment is reviewed and evaluated. You will also be expected to arrive to class fully prepared (charged chromebook, earbuds, etc). Failure to do so will result in a loss of "preparedness" points.

Labs (30%)

New York State mandates that every student must complete 1200 laboratory minutes. We will meet this requirement by participating in a wide variety of virtual and hands-on lab work throughout the year. If this number is not met, you will not be permitted to take the Regents exam in June.

Quizzes/Tests (60%)

Tests and quizzes will often be a combination of multiple choice, short answer, and performance questions. They will be based on all material covered since the last test, including class discussions, homework, quizzes, and labs.

Cheating and Plagiarism will not be tolerated:

Students caught cheating will receive a zero for the assignment. This includes but is not limited to: copying from textbook, internet or classmates; use of hand held electronic devices; having any material at your desk during quizzes/tests; talking to anyone about anything during quizzes/tests.

Info. for Parents:

-Be sure to log on to the Parent Portal to view all upcoming major assignments and their due dates. All grades will be posted on a regular basis as well.

-Please note that this is a high school-level class and your child's overall grade in it will appear on their high school transcript.

-Please feel free to email me at kstiegel@3villagecsd.org or call at **631-730-4700** with any questions or concerns you may have. Likewise, please let me know in advance if your child will be missing school for a significant amount of time. I can easily forward work home so as to keep your child on track.

Thank you in advance for your help. I am looking forward to a great school year!

Farm to School, 2021-22

Mr. Stiegelmaier

Enrollment Code: _____



Required Materials:

- 1) Old sneakers/shoes and work gloves that can get dirty
(to be left in school...write name on them)
- 2) Small section in a shared binder
- 3) Charged chromebook and earbuds

This course is designed to introduce you to some basic concepts related to maintaining and growing a garden for food production. Through participation in garden based activities, you will learn about the agricultural science concepts, as well as the care and management of a garden. You will explore food production, gaining an understanding as to the source of the products we consume. You will also apply the principles of sustainable organic farming practices while taking advantage of our school greenhouse, as well as local farms, grocery stores, restaurants, and other available resources. Be prepared to work hard, have lots of fun, and get your hands dirty!

Grading Policy:

You will earn a numerical grade for this class each marking period, according to the following breakdown...

Assignments (60%)

Assignments include any activities we work on during class. They may range from lab reports to homework assignments, and research projects to long-term experiments.

Current Topics (30%)

You will be required to complete four Current Topics assignments each marking period. Detailed information will be given out in class. However, you will have different activities to choose from when completing this requirement. They will include article summaries, trip reports, personal interviews, and T.V. show summaries.

Participation and Preparedness (10%)

We will all be working together to make this class successful and enjoyable. Because of this, a portion of your grade will be determined by your attitude and effort during class activities. Another portion will revolve around your chromebook (having it in class every day, fully charged, and ready to go).

Any work not turned in on time will be marked as "Missing" and will calculate as a "zero" in your overall grade. The "Missing" does mean that you have the opportunity to make up that assignment though. This should be done as soon as possible to minimize the points lost. Likewise, any work due on a day you are absent, have a music lesson, or are attending another in-school activity must be handed in on that day or the next. Otherwise it, too, will be marked as "Missing." Because some assignments will be submitted directly on our Google Classroom page, you must remember to hit the "Turn In" button in order to receive credit.

PARENTS:

- Be sure to log on to the Parent Portal to view all upcoming major assignments and their due dates. All grades will be posted on a regular basis as well.
- Please feel free to email me at kstiegel@3villagecsd.org or call at 631-730-4700 with any questions or concerns you may have.

Thank you in advance for your help. I am looking forward to a great school year!



COURSE REQUIREMENTS & EXPECTATIONS



EARTH SCIENCE - MR. WEINER

kweiner@3villagecsd.org

Print Student Name	_____
Student Signature	_____
Parent Signature	_____

Course Objective:

The purpose of this course is to introduce students to the study of Earth Science and to develop critical thinking and laboratory skills. This course will discuss topics such as deep space astronomy, mapping, Earth motions in space, insolation, weather, the water cycle, erosional and depositional processes, rock rormation, the Earth’s crust, geologic history, landscape formation and more. Earth Science is a high school course and will appear on the students’ Ward Meville transcript. The overall course grade is based on the four quarters (22% each) and the Regents Exam grade (12%). In the event that the Regents Exam is canceled, the overall course grade will be the average of the four quarter grades.

The course is based on the 2000 New York State Regents Earth Science curriculum. **A *minimum of 20 hours of laboratory investigations must be satisfactorily completed by the third Wednesday in May in order to take the June Earth Science Regents exam. Students that do not meet the State lab requirement will not be permitted to take the Regents exam.***

Materials Needed For Class:

- | | |
|--|--------------------------------------|
| 3-ring binder | Small pencil sharpener |
| Loose leaf paper (approx. 20 sheets) | Calculator |
| Folder (or slim binder) | Ear buds (that work with Chromebook) |
| Pen (blue or black ink) & Pencils | Stylus for Chromebook |
| Colored pencils (red orange yellow green blue brown black) | |

Resources Supplied by School:

- Earth Science Reference Tables
- Chromebook & charger
- Review Book (digital version)

Student Responsibilities:

- A. Follow class rules.
 - 1. Always be prepared for class with a charged Chromebook, binder, ESRT, pencil/pen, calculator, charger, etc.).
 - 2. Be ready to work when the bell rings (requested materials must be out and ready to use).
 - 3. Raise hand and wait to be recognized before speaking.
 - 4. Follow directions carefully especially during lab sessions.
 - 5. Respect other students, the teacher, school equipment and yourself (use appropriate language and behavior).
- B. Ask questions, that is what science is all about.
- C. Always complete assignments to the best of your ability. Seek extra help if needed.
- D. No eating or drinking in class unless permitted for a specific reason.
- E. The use of unauthorized electronic devices (i.e. recording devices, cell phones, smart watches, earbuds and cameras) are not permitted during class time and during any testing, unless specifically directed by teachers. The use of recording devices, of any kind, is not permitted on school property and District transportation.
- F. Google Meet lessons (if offered) may not be recorded.
- G. Students will abide by the policies and procedures outlined in the Chromebook User Agreement.
- H. Students are expected to participate in all academic activities facilitated by the teacher. Class work must be completed during class time and homework must be completed outside of class time, unless otherwise allowed by the teacher for a specific assignment.
- I. Students will access G-Suite for Education through their Three Village Central School District issued credentials. This allows the student to move independently to Google Classroom.
- J. If the District permits distance learning, remote students will arrive **on-time for Google Meet sessions**. Remote students are required to use their Three Village Central School District issued chromebook. Expectations for remote students:

<h3>BE ON TIME</h3> <p>Wake up early Log on a few minutes before class</p> 	<h3>BE IN A QUIET PLACE</h3> <p>Find a quiet place Check your surroundings</p> 	<h3>BE PREPARED</h3> <p>Computer is charged Camera is on Use headphones if you have them</p> 
<h3>PRESENTATION</h3> <p>Wear appropriate clothing Sit up straight Be in camera view</p> 	<h3>MUTE YOURSELF</h3> <p>Mute yourself when your teacher or another student is talking</p> 	<h3>PARTICIPATION</h3> <p>Be focused Be attentive Be an active participant</p> 

Monitoring Student Performance:

- A. The District provides a method for parents to view students' grades on-line. By clicking on the "Parent Portal" link on the District's website (3villagecsd.org), parents can view Earth Science grades for individual assignments and quarter average as well as see assignments marked as missing or incomplete. Parents should try to visit the "Parent Portal" at the end of every week. Please note that a lag time of a few days is common between an assignment's due date and the grade being visible on the Portal. Please email me if you have any questions or concerns at kweiner@3villagecsd.org. Earth Science is a challenging subject and success requires concerted support from both home and school.
- B. Each topic in Earth Science will be accompanied by notes, slide presentations, videos, lab activities, and practice questions. These resources will be distributed on paper or distributed digitally via Google Classroom. Parents should occasionally check Google Classroom to view student work.
- C. The District subscribes to an educational website (www.castlelearning.com) that provides students with practice questions. Students will be assigned teacher-designed question sessions that will be graded online. Students can also design their own question sessions for additional practice. Parents can monitor student progress by visiting the website, entering the student's username and password, and clicking on completed assignments. Other features allow parents to track student progress over the school year as well as identify student strengths and weaknesses.
- D. Four report cards will be posted on the Parent Portal over the course of the year.

Work Missed Due to Absence

- A. All assignments, labs, quizzes and tests must be made up. Contact the teacher to set up a time for an extra help session, if needed.
- B. It is the responsibility of the student to gather and complete all work that was missed due to absence.
- C. Normally, students are expected to be caught up with work within 1 or 2 days of an absence.
- D. In the case of an extended absence, please contact the teacher to establish a modified timeline of due dates.

Grading Criteria

- A. Assessments (60%)**
 - 1. All tests will be announced a minimum of three days in advance. This provides the students with adequate time to study, review and seek extra help.
 - 2. Tests will consist of Regents exam-style questions and will be taken using a combination of paper and Chromebooks.
 - 3. There will be 2-3 topic tests each quarter.
 - 4. A midterm exam will be given at the end of the 2nd quarter which will be weighted as 20% of the quarter grade.
 - 5. Quiz questions will vary in style to allow for a variety of responses including free response, multiple choice, demonstration of lab skills, diagramming and calculation.
 - 6. Most quizzes will be announced a minimum of one day in advance.

B. Labs (30%)

1. Multiple lab activities will be integrated into each topic. Lab write-ups will often be started in class and completed at home.
2. Labs that are submitted more than a week after the due date will lose 30 points. Due dates will be modified for students that were absent during the lab.
3. Labs must be completed and submitted for a grade within the quarter that the lab was assigned in order to receive credit (the final date of lab submission for each quarter will be provided by the teacher). Only labs assigned to the class at large may be submitted for credit (no individualized make-up labs will be assigned).
4. In order to take the Earth Science Regents exam, a minimum of 20 lab hours must be satisfactorily completed by the third Wednesday in May. Students should submit labs well in advance of this date to allow sufficient time for teacher grading and for student revisions (if necessary to ensure that the lab write-up has been satisfactorily completed). Parents will be contacted if a student is in danger of not meeting the State lab requirement.

C. Homework & Classwork (10%)

1. Homework will be assigned approximately two to three times each week, this includes reviewing notes, completing work sheets, reading, answering practice questions, viewing videos or slide presentations, completing labs, and studying.
2. No late homework is accepted after it is checked/reviewed (except due to absence).
3. Students are expected to be prepared to work with all necessary materials soon after the bell rings to start class. This includes a charged Chromebook (with charger), proper programs/files open on computer screen, ESRT, pen/pencil, binder with loose-leaf paper.
4. Students are required to have their cell phones, ear buds and other unauthorized devices placed in their backpacks and not in view.
5. Students are expected to show the proper effort needed on in-class assignments.
6. Students are expected to participate in class discussions & ask questions (as necessary).
7. Students are expected to complete classwork in a timely manner consistent with their ability & course level.

* **Extra help** will be available in-person after school on Tuesdays (this day may change as circumstances arise) and during a common free period (if any). The student must contact the teacher to arrange a time for the extra help session.

Discipline Plan

First transgression:	<i>Warning</i>
Second transgression:	<i>Time after class and/or alternative work</i>
Third transgression:	<i>Dean's detention and parent call</i>
Severe or repeated problems:	<i>Office referral and parent call</i>



P.J. Gelinas Junior High School

Course Information for Science Research I

Course Objective

The goal of the Science Research I course is to teach the use of the scientific method, to conduct organized research, and to integrate Science with Technology, Research, Engineering, Art and Math (STREAM).

Materials Needed For Class:

binder (may be shared with other classes)	pencils
loose leaf paper	calculator
pen (blue or black ink only)	ear buds

Student Expectations

- A. Follow class rules.
 1. Always be prepared for class (binder, handouts, Chromebook & charger).
 2. Be on time and ready to work when the bell rings.
 3. Raise hand and wait to be recognized before speaking.
 4. Follow directions carefully especially during lab sessions.
 5. Never touch any equipment/materials until instructed to do so.
 6. Respect other students, the teacher, school equipment and yourself (use appropriate language and behavior).
 7. Work safely by following teacher instructions and common sense.
- B. No eating or drinking in class unless permitted for a specific reason.
- C. No cell phone usage (keep in backpack) unless permitted by the teacher for a specific use.
- D. Due to the experiences that the course offers, initiative, curiosity, maturity, good behavior and the ability/desire to attentively listen to others are required.
- E. Students must be able to work independently as well as part of a group.
- F. Ask questions, that is what science is all about.
- G. Always complete assignments to the best of your ability. Seek extra help if needed.

Grading Criteria

Each assignment and project will be weighted differently based on its length and level of difficulty. Some of the types of tasks that students will be graded on include:

- Teacher-assigned labs
- Group & individual projects
- Presentations to the class
- Science Congress project
- Field trips
- Review of current events in science
- Participation as an individual in both class and group settings.
- Preparedness for class.
- Following directions and rules.

Transcript Information

The Science Research I course bears 0.5 units of study.

Extra Help

Extra help will be available to those who need additional time or help with assignments. Contact the teacher to set up a time.

Name _____

Student Signature _____

Parent Signature _____



COURSE REQUIREMENTS & EXPECTATIONS



EARTH SCIENCE - MR. WEINER

(kweiner@3villagecsd.org)

Print Student Name	_____
Student Signature	_____
Parent Signature	_____

Course Objective:

The purpose of this course is to introduce students to the study of Earth Science and to develop critical thinking and laboratory skills. This course will discuss topics such as deep space astronomy, mapping, Earth motions in space, insolation, weather, the water cycle, erosional and depositional processes, rock formation, the Earth's crust, geologic history, landscape formation and more. Earth Science is a high school course and will appear on the students' Ward Meville transcript. The overall course grade is based on the four quarters (22% each) and the Regents Exam grade (12%). In the event that the Regents Exam is canceled, the overall course grade will be the average of the four quarter grades. ***Honors students must maintain a 90% average in the course.***

The course is based on the 2000 New York State Regents Earth Science curriculum. **A minimum of 20 hours of laboratory investigations must be satisfactorily completed by the third Wednesday in May in order to take the June Earth Science Regents exam. Students that do not meet the State lab requirement will not be permitted to take the Regents exam.**

Materials Needed For Class:

- | | |
|--|--------------------------------------|
| 3-ring binder | Small pencil sharpener |
| Loose leaf paper (approx. 20 sheets) | Calculator |
| Folder (or slim binder) | Ear buds (that work with Chromebook) |
| Pen (blue or black ink) & Pencils | Stylus for Chromebook |
| Colored pencils (red orange yellow green blue brown black) | |

Resources Supplied by School:

- Earth Science Reference Tables
- Chromebook & charger
- Review Book (digital version)

Student Responsibilities:

- A. Follow class rules.
 1. Always be prepared for class with a charged Chromebook, binder, ESRT, pencil/pen, calculator, charger, etc.).
 2. Be ready to work when the bell rings (requested materials must be out and ready to use).
 3. Raise hand and wait to be recognized before speaking.
 4. Follow directions carefully especially during lab sessions.
 5. Respect other students, the teacher, school equipment and yourself (use appropriate language and behavior).
- B. Ask questions, that is what science is all about.
- C. Always complete assignments to the best of your ability. Seek extra help if needed.
- D. No eating or drinking in class unless permitted for a specific reason.
- E. The use of unauthorized electronic devices (i.e. recording devices, cell phones, smart watches, earbuds and cameras) are not permitted during class time and during any testing, unless specifically directed by teachers. The use of recording devices, of any kind, is not permitted on school property and District transportation.
- F. Google Meet lessons (if offered) may not be recorded.
- G. Students will abide by the policies and procedures outlined in the Chromebook User Agreement.
- H. Students are expected to participate in all academic activities facilitated by the teacher. Class work must be completed during class time and homework must be completed outside of class time, unless otherwise allowed by the teacher for a specific assignment.
- I. Students will access G-Suite for Education through their Three Village Central School District issued credentials. This allows the student to move independently to Google Classroom.
- J. If the District permits distance learning, remote students will arrive **on-time for Google Meet sessions**. Remote students are required to use their Three Village Central School District issued chromebook. Expectations for remote students:

<p>BE ON TIME</p> <p>Wake up early Log on a few minutes before class</p> <p>hi </p>	<p>BE IN A QUIET PLACE</p> <p>Find a quiet place Check your surroundings</p> <p><i>Working from home</i> </p>	<p>BE PREPARED</p> <p>Computer is charged Camera is on Use headphones if you have them</p> 
<p>PRESENTATION</p> <p>Wear appropriate clothing Sit up straight Be in camera view</p> 	<p>MUTE YOURSELF</p> <p>Mute yourself when your teacher or another student is talking</p> <p><i>IS THIS THING ON?</i> </p>	<p>PARTICIPATION</p> <p>Be focused Be attentive Be an active participant</p> 

Monitoring Student Performance:

- A. The District provides a method for parents to view students' grades on-line. By clicking on the "Parent Portal" link on the District's website (3villagecsd.org), parents can view Earth Science grades for individual assignments and quarter average as well as see assignments marked as missing or incomplete. Parents should try to visit the "Parent Portal" at the end of every week. Please note that a lag time of a few days is common between an assignment's due date and the grade being visible on the Portal. Please email me if you have any questions or concerns at kweiner@3villagecsd.org. Earth Science is a challenging subject and success requires concerted support from both home and school.
- B. Each topic in Earth Science will be accompanied by notes, slide presentations, videos, lab activities, and practice questions. These resources will be distributed on paper or distributed digitally via Google Classroom. Parents should occasionally check Google Classroom to view student work.
- C. The District subscribes to an educational website (www.castlelearning.com) that provides students with practice questions. Students will be assigned teacher-designed question sessions that will be graded online. Students can also design their own question sessions for additional practice. Parents can monitor student progress by visiting the website, entering the student's username and password, and clicking on completed assignments. Other features allow parents to track student progress over the school year as well as identify student strengths and weaknesses.
- D. Four report cards will be posted on the Parent Portal over the course of the year.

Work Missed Due to Absence

- A. All assignments, labs, quizzes and tests must be made up. Contact the teacher to set up a time for an extra help session, if needed.
- B. It is the responsibility of the student to gather and complete all work that was missed due to absence.
- C. Normally, students are expected to be caught up with work within 1 or 2 days of an absence.
- D. In the case of an extended absence, please contact the teacher to establish a modified timeline of due dates.

Grading Criteria

- A. Assessments (60%)**
 - 1. All tests will be announced a minimum of three days in advance. This provides the students with adequate time to study, review and seek extra help.
 - 2. Tests will consist of Regents exam-style questions and will be taken using a combination of paper and Chromebooks.
 - 3. There will be 2-3 topic tests each quarter.
 - 4. A midterm exam will be given at the end of the 2nd quarter which will be weighted as 20% of the quarter grade.
 - 5. Quiz questions will vary in style to allow for a variety of responses including free response, multiple choice, demonstration of lab skills, diagramming and calculation.
 - 6. Most quizzes will be announced a minimum of one day in advance.

B. Labs (30%)

1. Multiple lab activities will be incorporated into each topic. Lab write-ups will often be started in class and completed at home.
2. Labs that are submitted more than a week after the due date will lose 30 points. Due dates will be modified for students that were absent during the lab.
3. Labs must be completed and submitted for a grade within the quarter that the lab was assigned in order to receive credit (the final date of lab submission for each quarter will be provided by the teacher). Only labs assigned to the class at large may be submitted for credit (no individualized make-up labs will be assigned).
4. In order to take the Earth Science Regents exam, a minimum of 20 lab hours must be satisfactorily completed by the third Wednesday in May. Students should submit labs well in advance of this date to allow sufficient time for teacher grading and for student revisions (if necessary to ensure that the lab write-up has been satisfactorily completed). Parents will be contacted if a student is in danger of not meeting the State lab requirement.

C. Homework & Classwork (10%)

1. Homework will be assigned approximately two to three times each week, this includes reviewing notes, completing work sheets, reading, answering practice questions, viewing videos or slide presentations, completing labs, and studying.
2. No late homework is accepted after it is checked/reviewed (except due to absence).
3. Students are expected to be prepared to work with all necessary materials soon after the bell rings to start class. This includes a charged Chromebook (with charger), proper programs/files open on computer screen, ESRT, pen/pencil, binder with loose-leaf paper.
4. Students are required to have their cell phones, ear buds and other unauthorized devices placed in their backpacks and not in view.
5. Students are expected to show the proper effort needed on in-class assignments.
6. Students are expected to participate in class discussions & ask questions (as necessary).
7. Students are expected to complete classwork in a timely manner consistent with their ability & course level.

* **Extra help** will be available in-person after school on Tuesdays (this day may change as circumstances arise) and during a common free period (if any). The student must contact the teacher to arrange a time for the extra help session.

Discipline Plan

First transgression:	<i>Warning</i>
Second transgression:	<i>Time after class and/or alternative work</i>
Third transgression:	<i>Dean's detention and parent call</i>
Severe or repeated problems:	<i>Office referral and parent call</i>