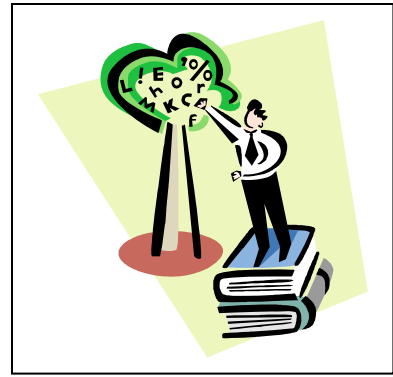


Paul J. Gelinas JHS Special Education Department

Mrs. Dawn Mason, Chairperson
dmason@3villagecsd.org
(631) 730-4779



Special education services are determined by the Committee on Special Education to meet the individual needs of students. The Special Education Department works side by side with general education teachers, the guidance office, and administrators to meet student's needs. We understand and appreciate the integral role parents play in their children's education. We encourage regular communication between home and school. Any parent who feels their child is not performing at an appropriate level should contact both the classroom teacher and guidance counselor in a timely manner.

Teachers	E-mail	Extra Help Schedule
Ms. Carlson	dcarlso1@3villagecsd.org	BDF days 9 th period
Ms. DeVecchio	ddelvecc@3VILLAGECSD.k12.ny.us	B and D days 7 th period
Mr. Fenster	r Fenster@3villagecsd.org	-----
Ms. Giles	cgiles@3villagecsd.org	Monday and Tuesday 5 th period
Ms. Santiago	vsantiag@3villagecsd.org	B and D days 6 th period
Ms. Marino	rmarino1@3villagecsd.org	-----
Mr. Murphy	cmurphy1@3VILLAGECSD.k12.ny.us	B and F days 6 th period
Ms. Salvato	lsalvat1@3VILLAGECSD.k12.ny.us	B and D days 5 th period
Ms. Traube	gtraube@3villagecsd.org	B and D days 7 th period
Ms. White	kwhite1@3villagecsd.org	Monday and Tuesday 5 th period

Departmental Support Staff		
Dr. Richards	mrichard@3villagecsd.org	Psychologist
Ms. Cubbins	kcubbin@3villagecsd.org	Speech Pathologist
Ms. McCrave	tmccrave@3VILLAGECSD.k12.ny.us	Speech Pathologist
Ms. Johnston	djohnsto@3VILLAGECSD.k12.ny.us	Social Worker



Useful Links

Three Village SEPTA: <http://www.threevillageseppta.com/>

LD online: <http://www.ldonline.com/>

International Dyslexia Association <http://www.interdys.org/>

National Center for Learning Disabilities: <http://www.nclld.org/>

Tools for Parents of Children with Disabilities and Special Needs
Learning Disabilities

<http://www.coping.org/specialneeds/learndis.htm>

Council for Exceptional Children: <http://www.cec.sped.org/>

