

Three Village Central School District



2009-10 ASSESSMENT RESULTS

Prepared by the Office of the Assistant Superintendent for Educational & Pupil Personnel Services

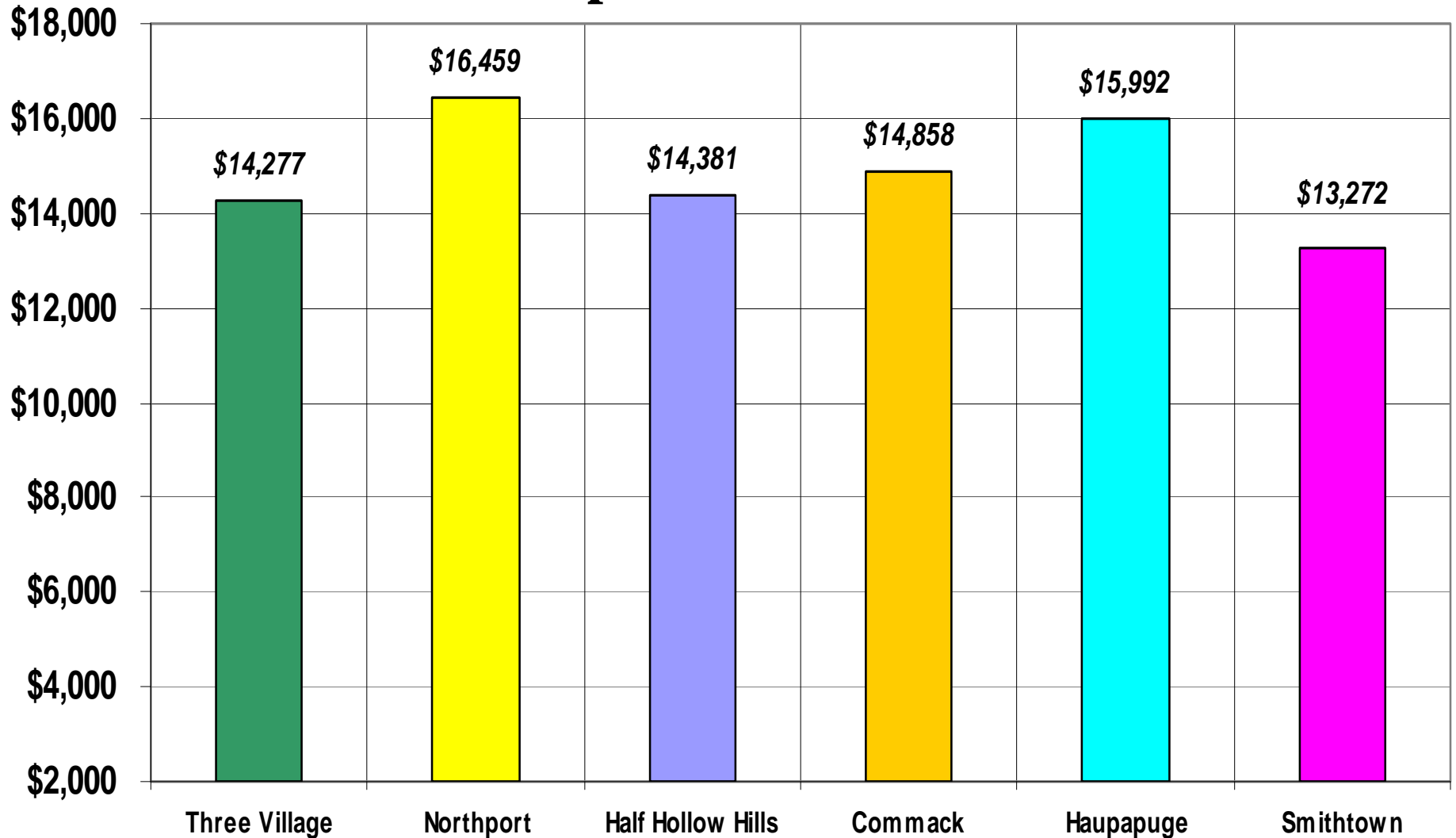
About This District

2009-10

- **Enrollment** **7572**
- **Grade Range** **K-12**
- **Teachers (PT & FT)** **602**
- **Other Professionals** **102**
- **Paraprofessionals** **180**
- **Per Pupil Expenditure** **\$14,277**
(2010)

Per Pupil Expenditure 2009-10

Comparable Schools

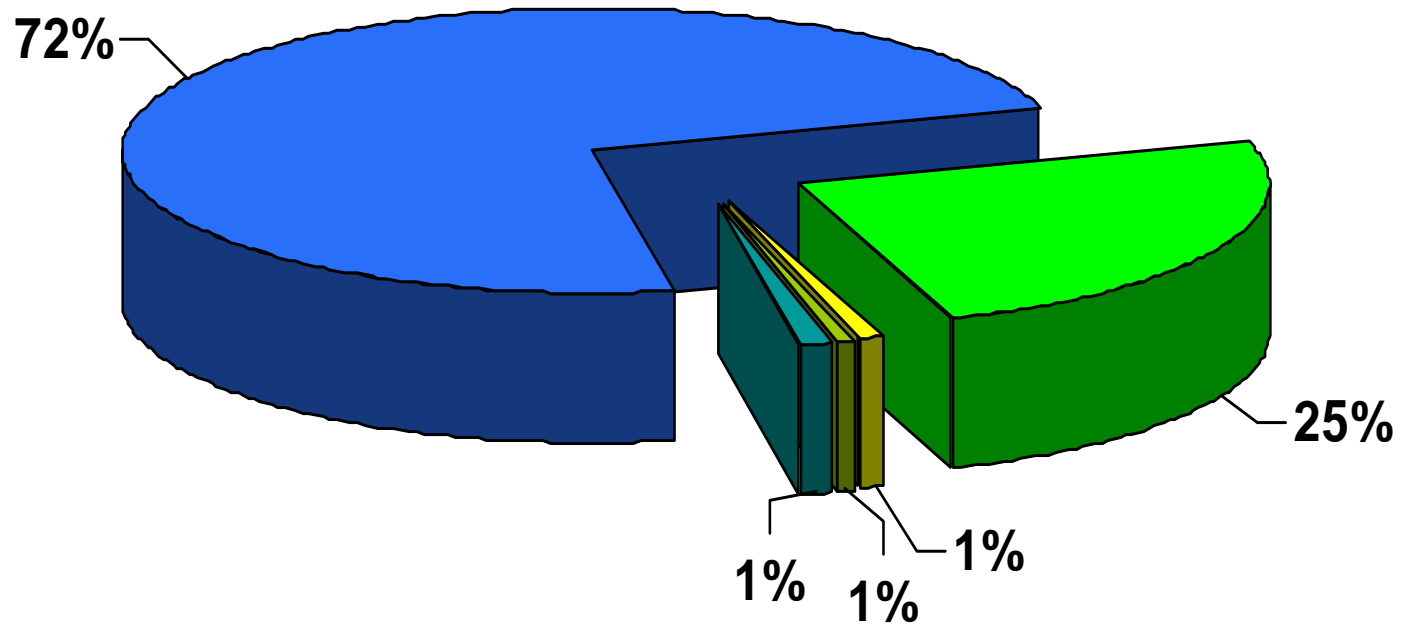


About The Class of 2010

- **Enrollment:** **657**
- **Graduates:** **645 (98%)**
- **Regents Diploma:** **94%**
- **Advanced Regents Diploma:** **71%**
- **Post- graduate College :** **95%**
 - **4 year** **71%**
 - **2 year** **24%**

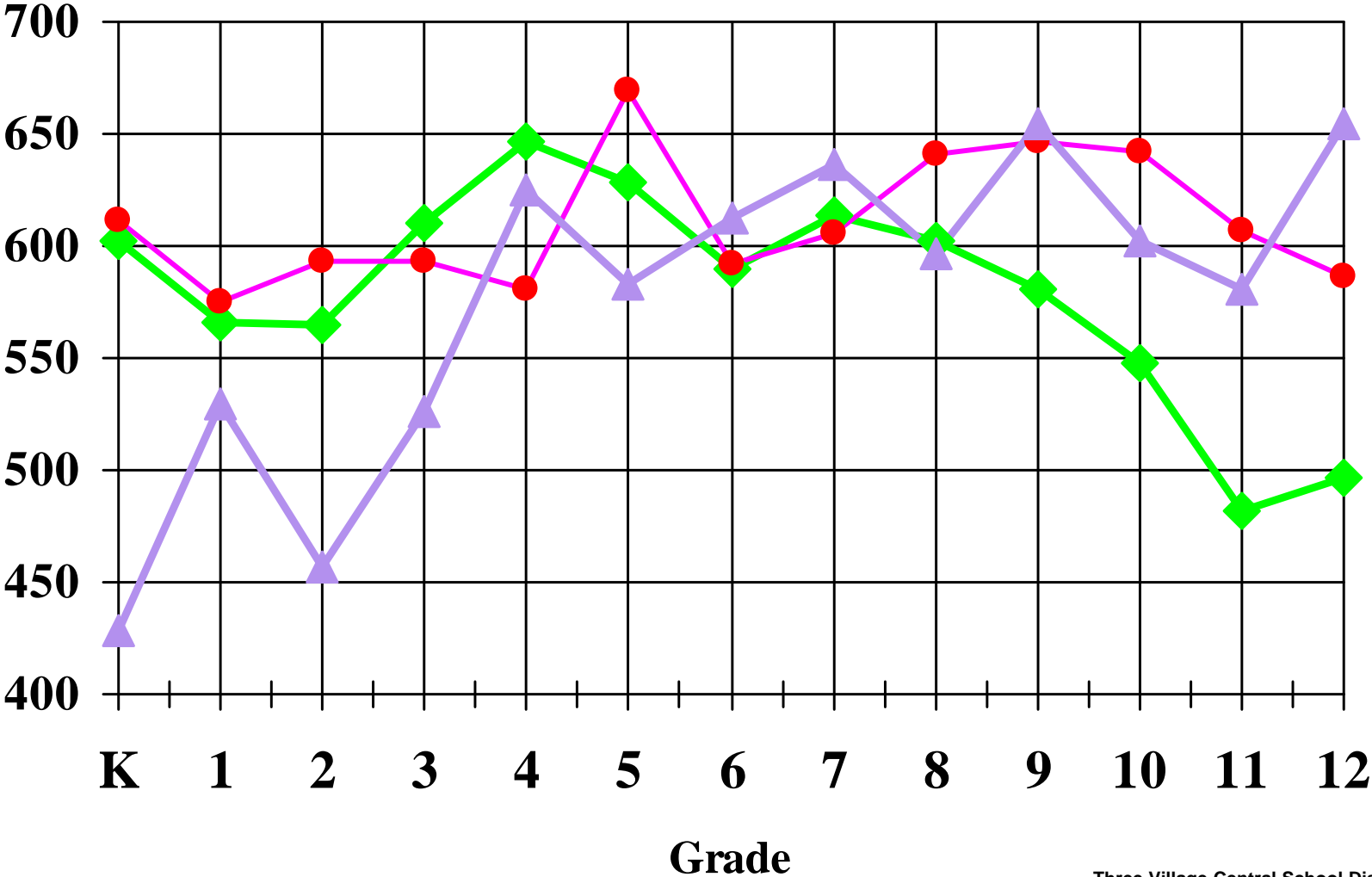
Distribution of 2010 Graduates

■ 4 Yr College ■ 2 Yr College ■ Other ■ Military ■ Employment

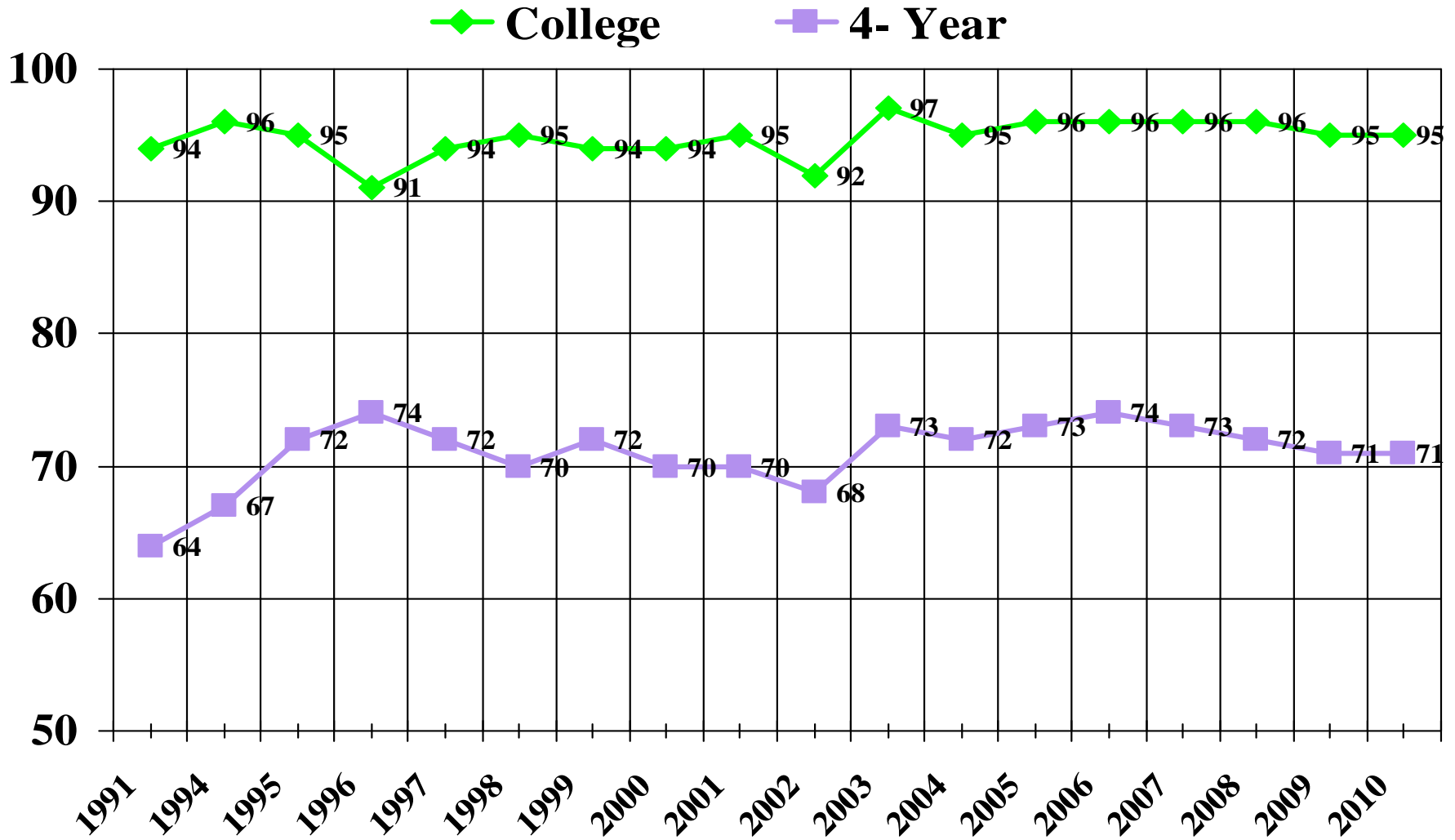


K-12 District Enrollment

◆ 2000-01 ● 2005-06 ▲ 2009-10

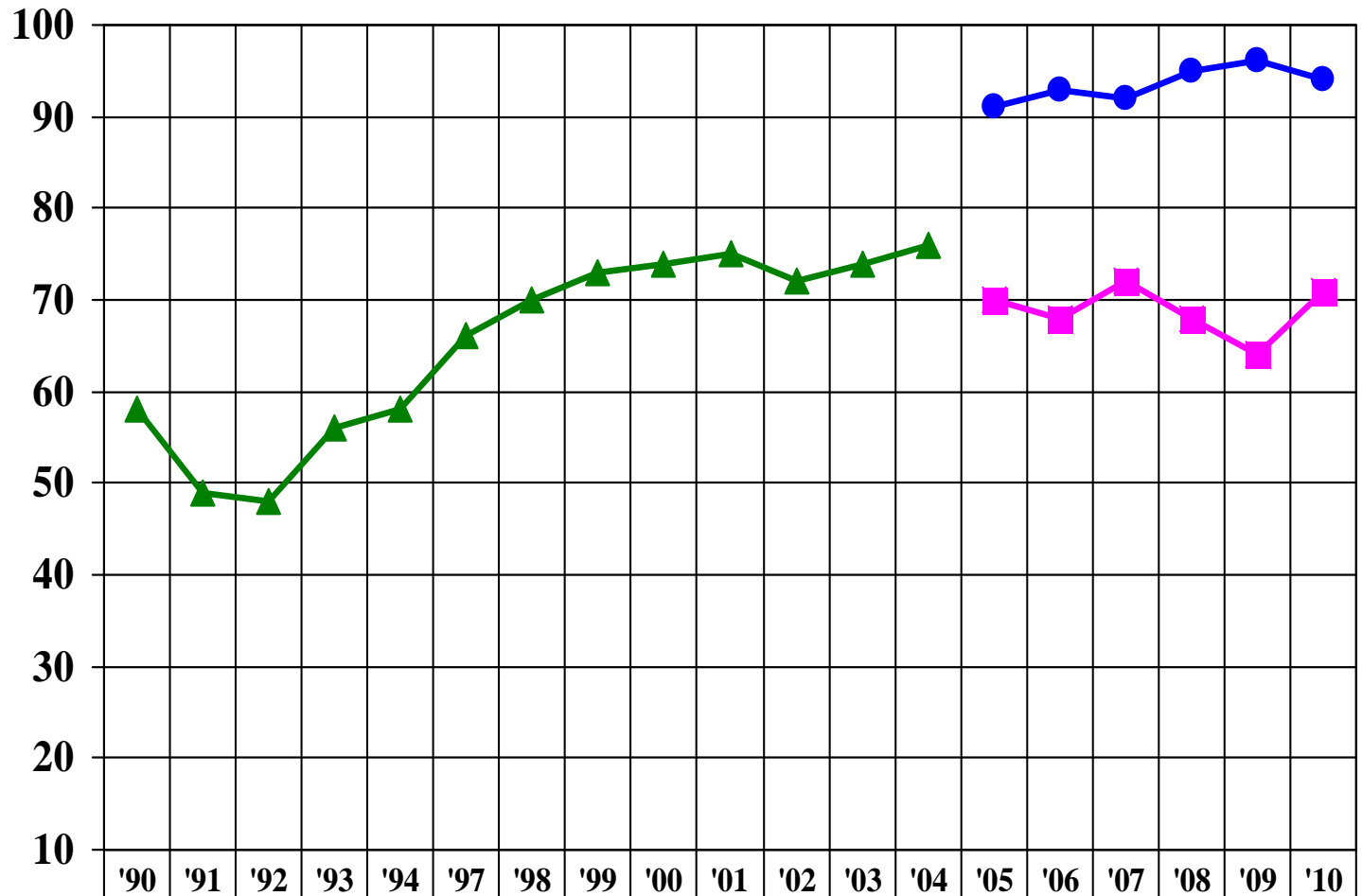


% of Students Going To College 1991 - 2010



Regents Diploma Rates 1990 - 2010

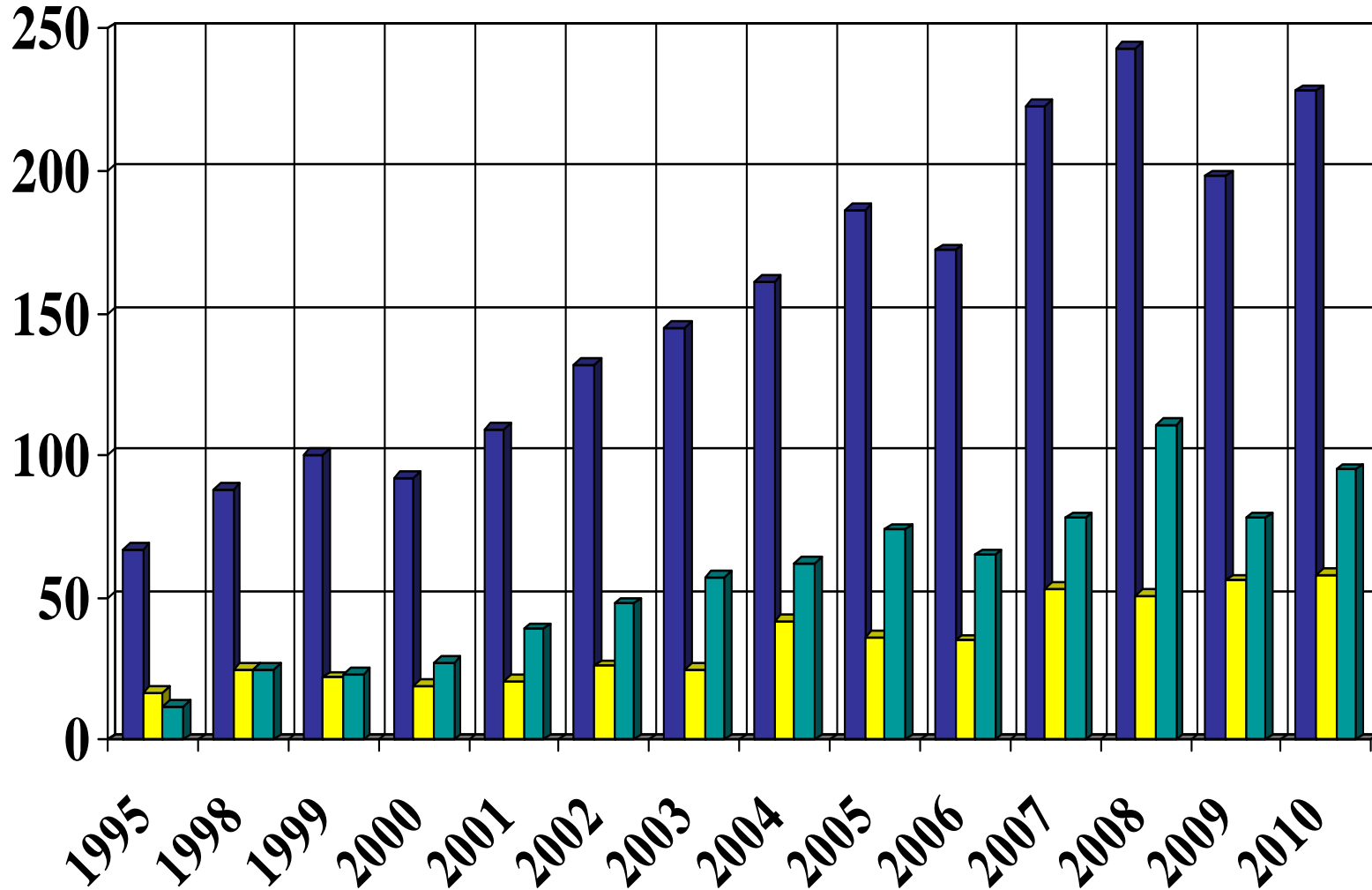
▲ Regents 1990-2004
 ■ Advanced Regents 2005-10
 ● Regents & Adv Regents 2005-10



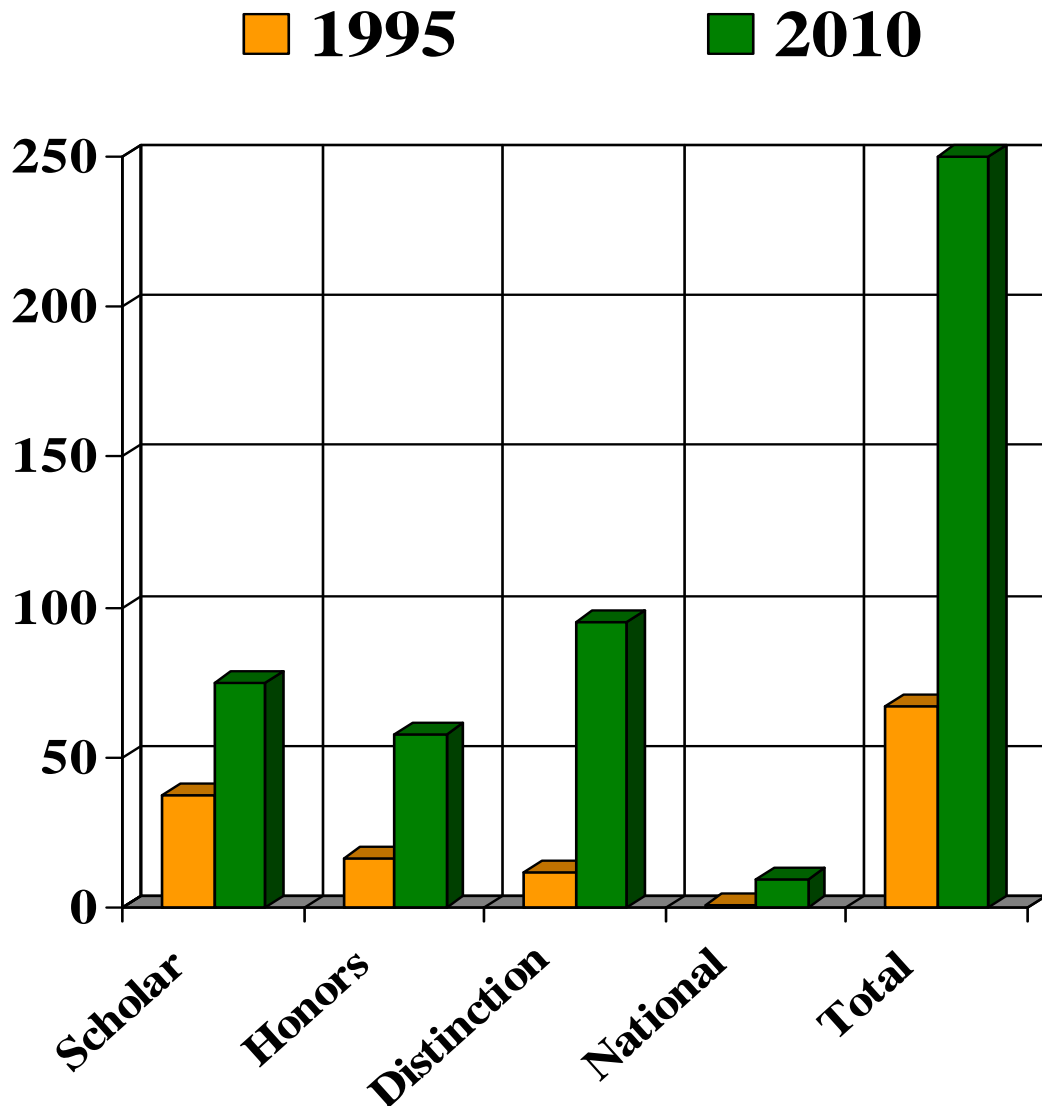
▲ Regents 1990-2004	58	49	48	56	58	66	70	73	74	75	72	74	76						
■ Advanced Regents 2005-10														70	68	72	68	64	71
● Regents & Adv Regents 2005-10														91	93	92	95	96	94

AP Scholars 1995-2010

■ Total Scholars
 ■ Scholars w/Honors
 ■ Scholars w/Distinction



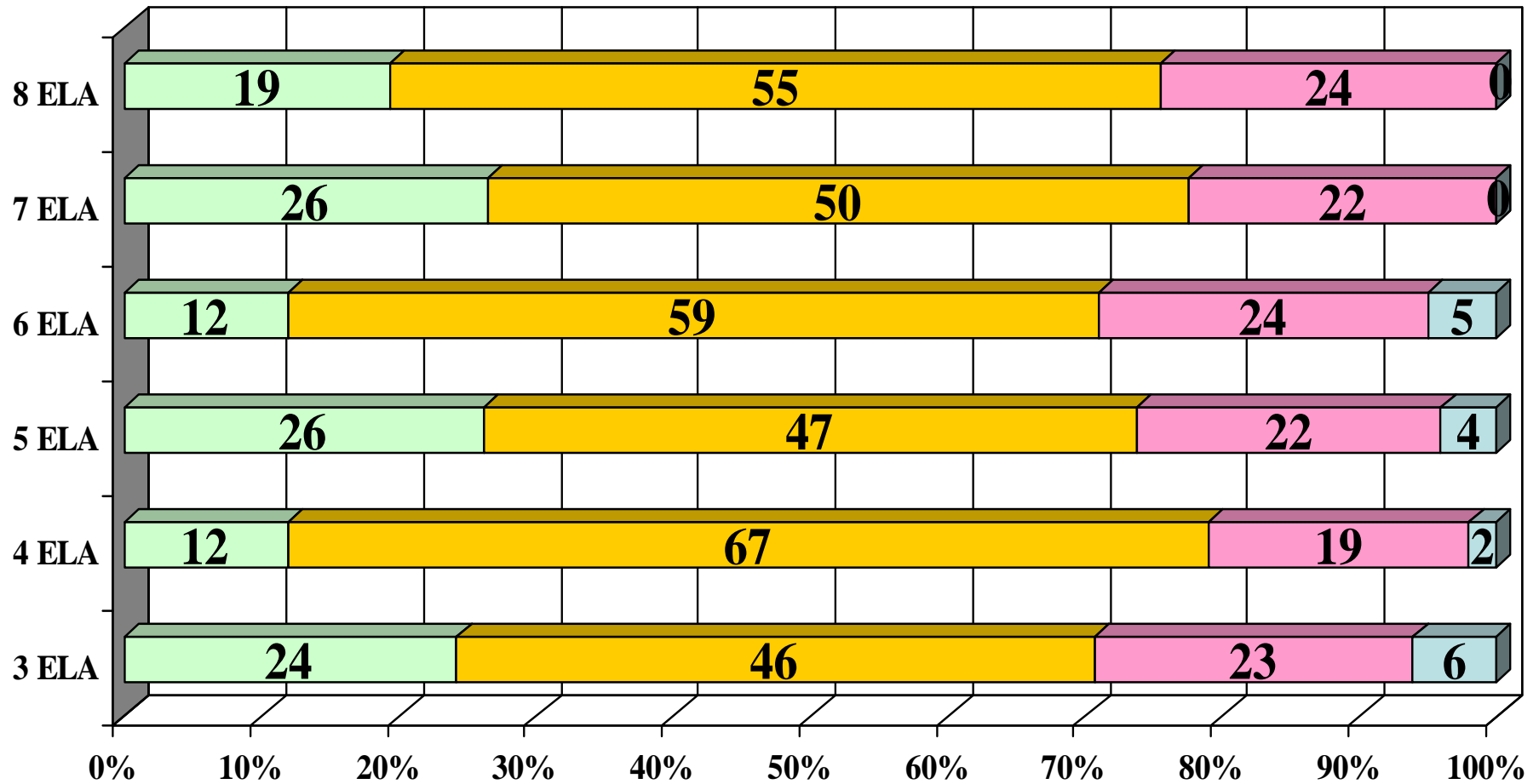
1995 & 2010 AP Scholars



- **AP Scholar (75)**
 - Earning an average of 3 on at least 3 AP Exams
- **With Honor (58)**
 - Avg. of 3.25 on at least 5 AP exams
- **With Distinction (95)**
 - Avg. of 3.5 on at least 5 AP exams
- **National Scholar (22)**
 - Avg. of 4 on at least 8 AP exams

2009-10 District ELA Performance (% Passing: Scoring Levels 3 & 4)

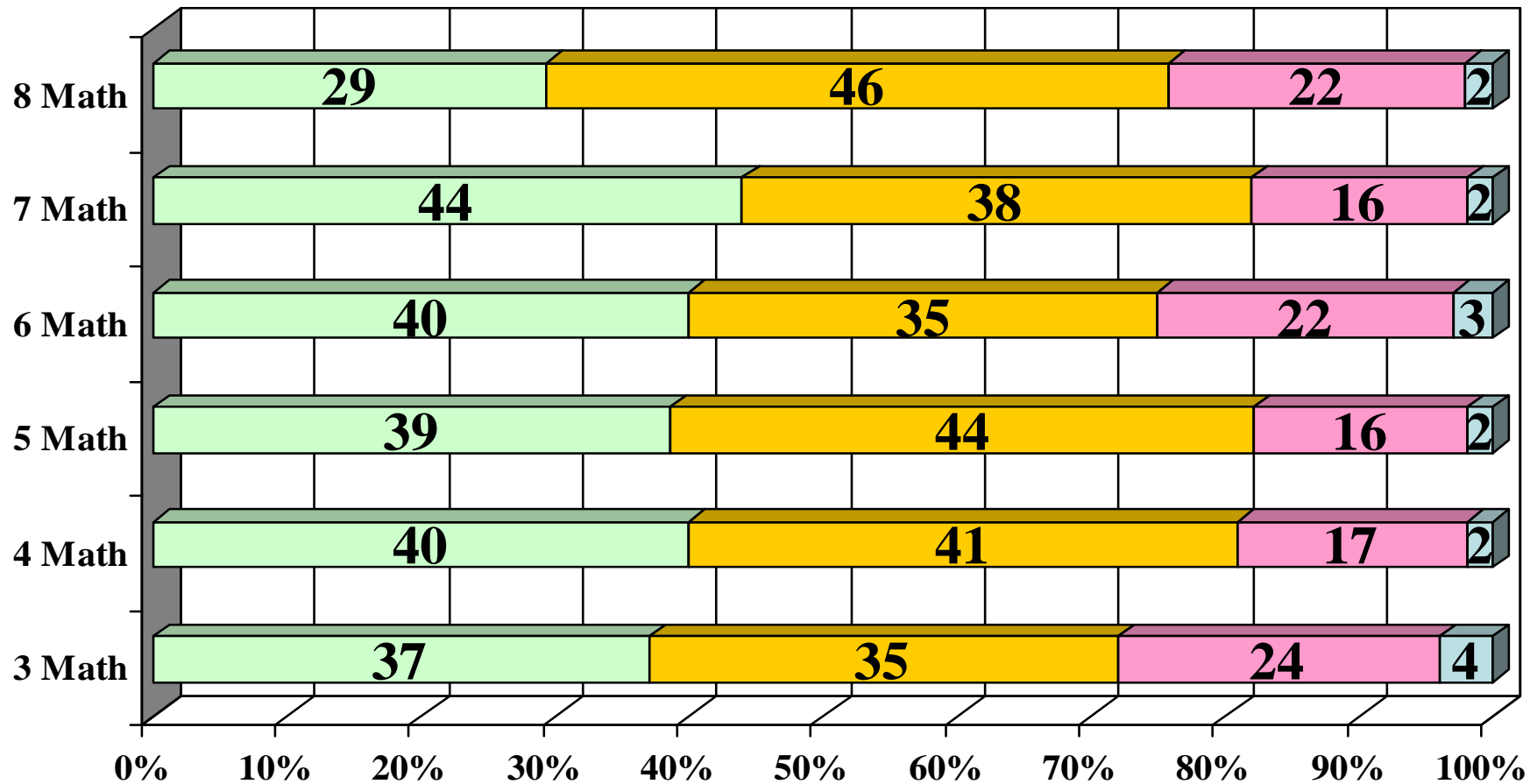
■ Level 4
 ■ Level 3
 ■ Level 2
 ■ Level 1



2009-10 District Math Performance

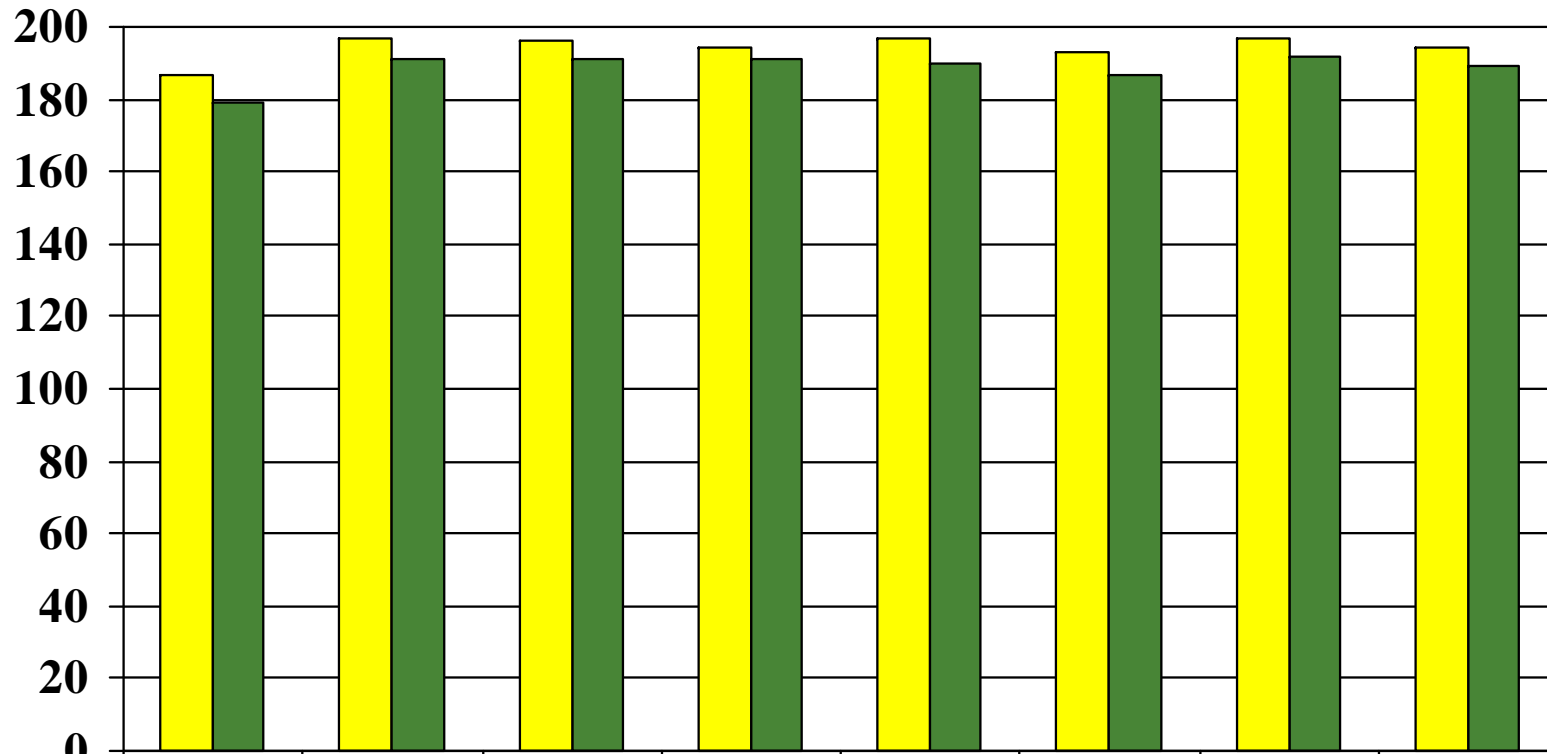
(% Passing: Scoring Levels 3 & 4)

Level 4 Level 3 Level 2 Level 1



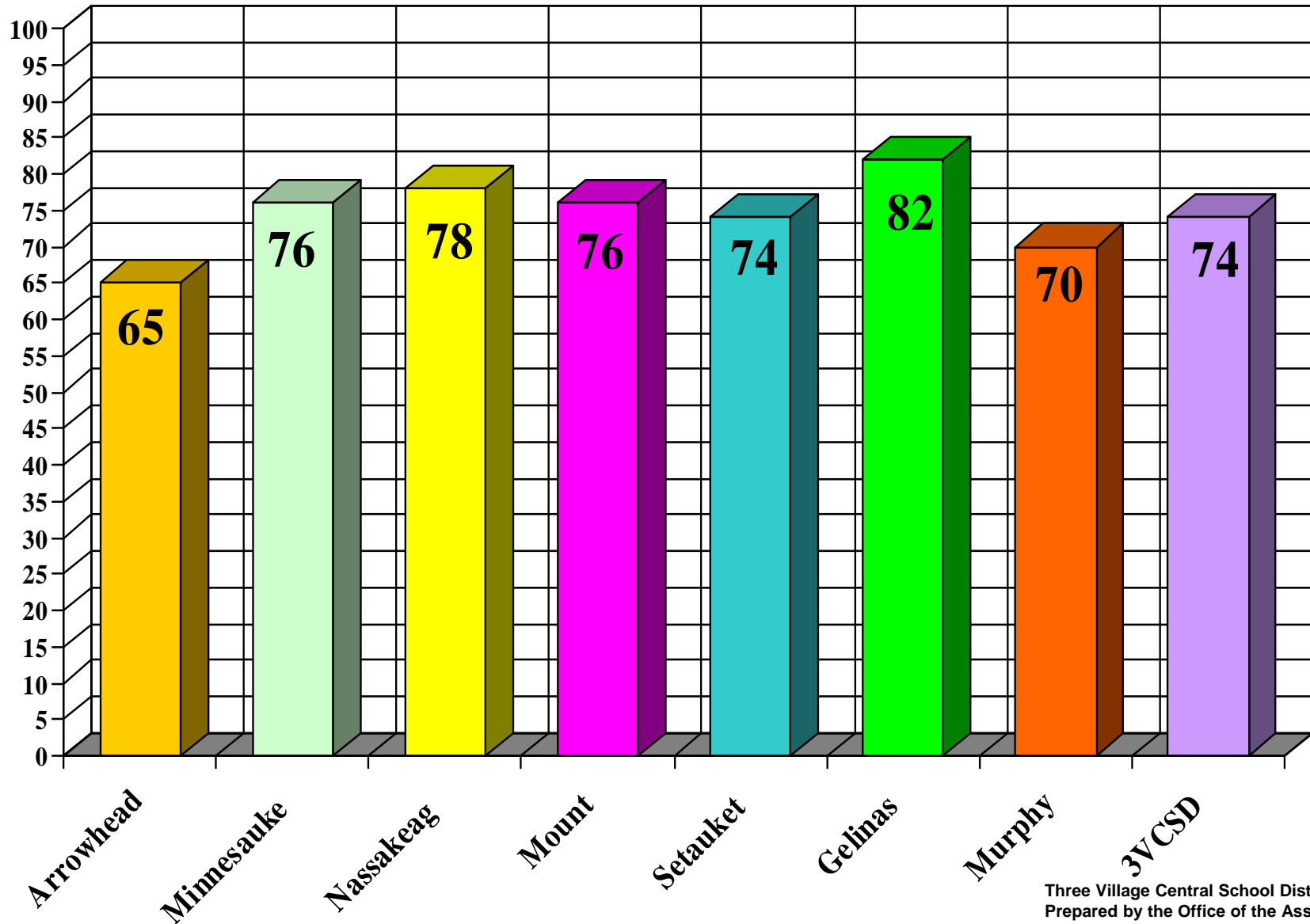
2010 3 - 8 ELA & MATH Performance Index

System of Accountability for Student Success (SASS)



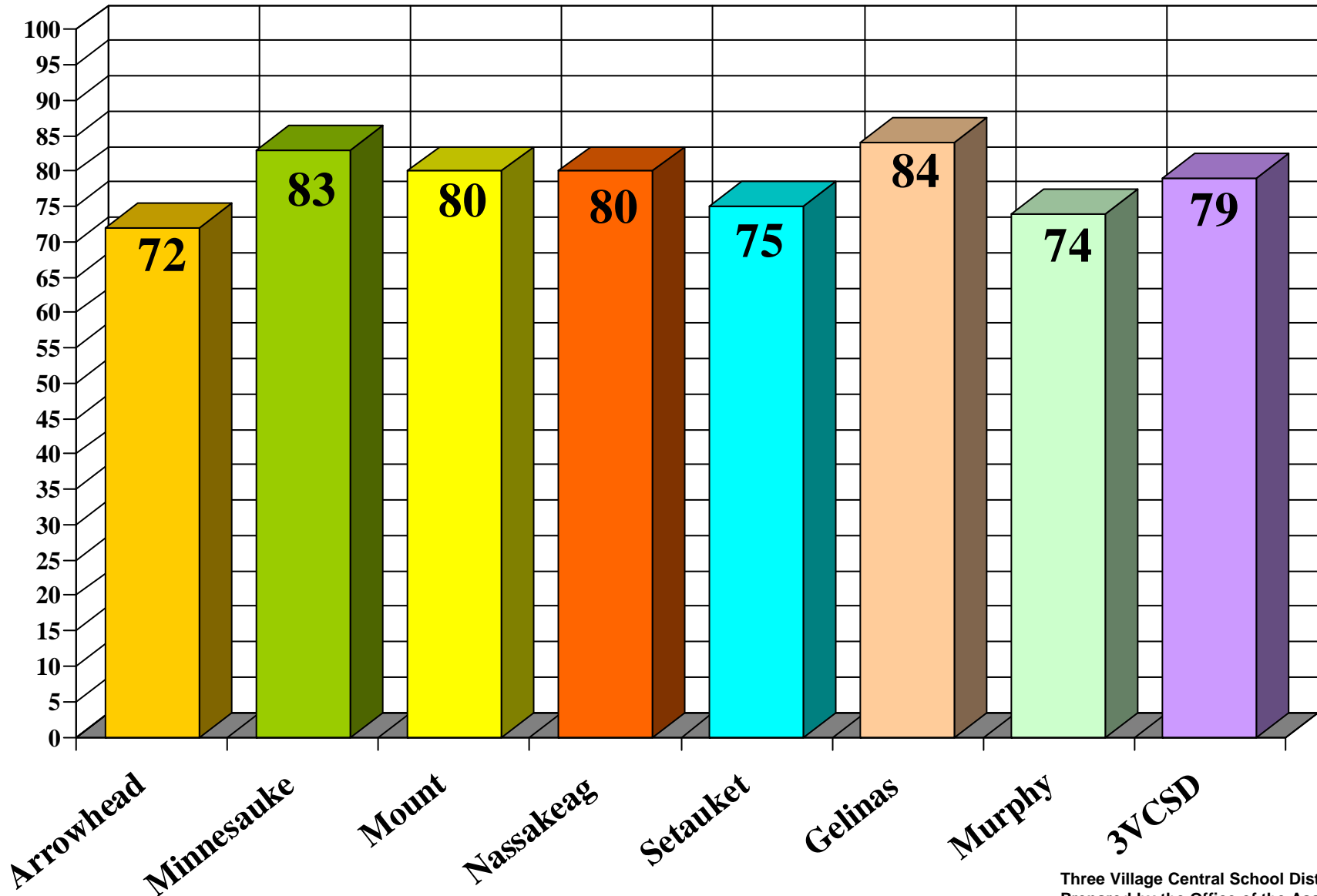
	Arrow	Minn	Mount	Nass	Setauket	Murphy	Gelinas	District
2010 Math	187	197	196	194	197	193	197	194
2010 ELA	179	191	191	191	190	187	192	189

2010 ELA 3 - 8 Scores Combined (%Passing: Scoring Levels 3 & 4)

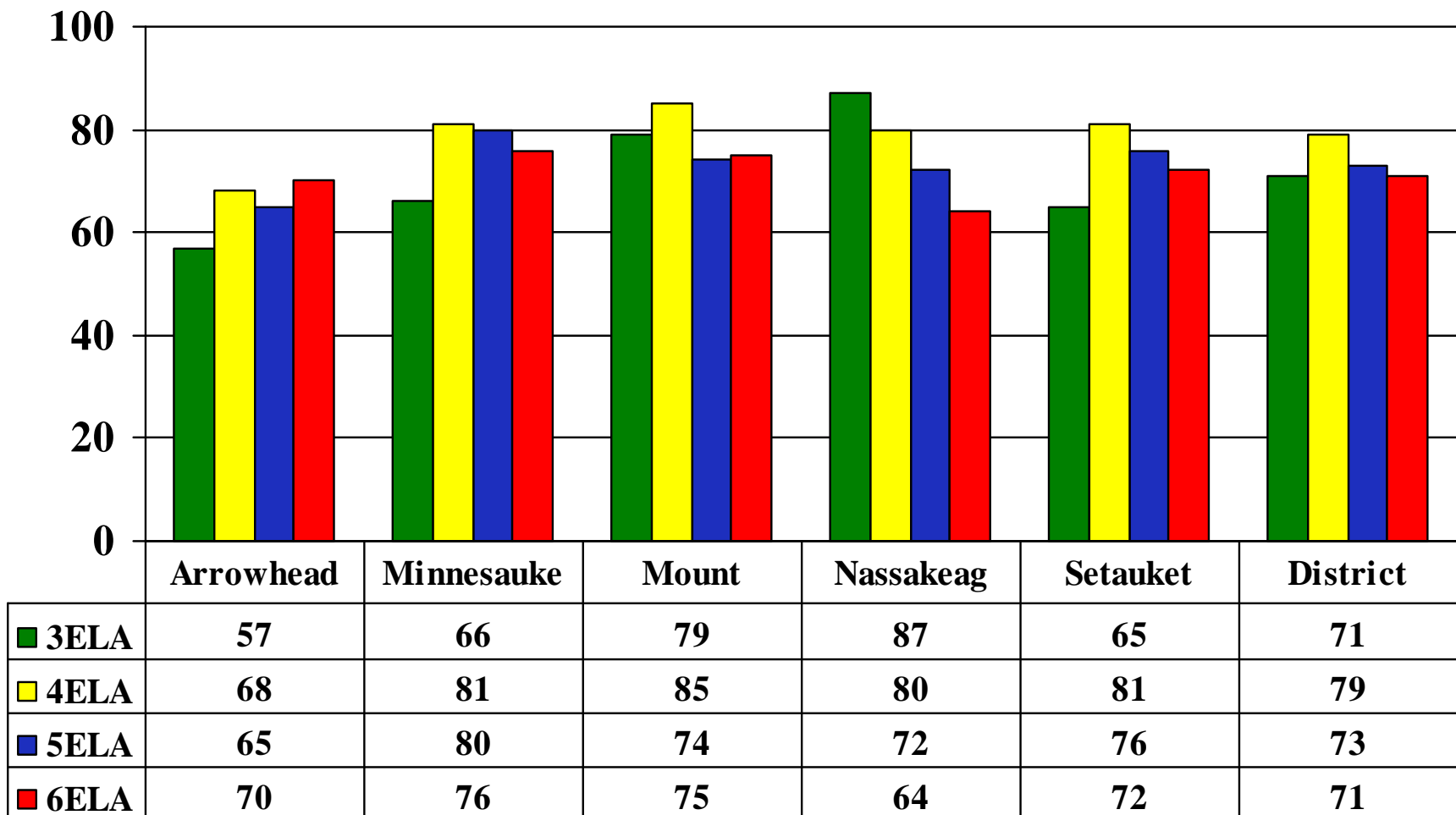


2010 Math Grades 3 - 8 Scores Combined

(%Passing: Scoring Levels 3 & 4)



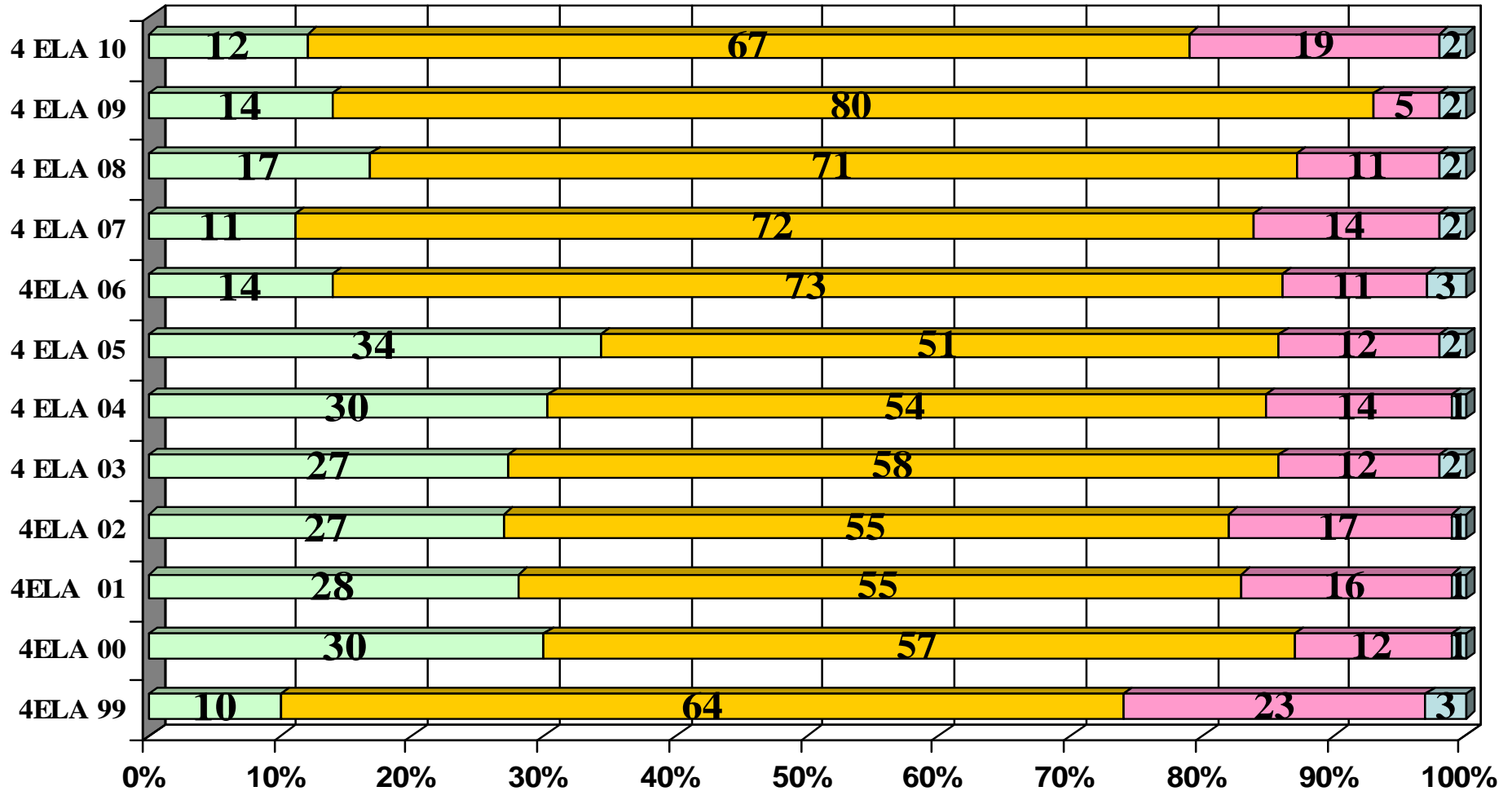
2009-10 Grades 3 - 6 ELA (%Passing: Scoring Levels 3 & 4)



1999 - 2010 Grade 4 ELA Performance

(% Passing: Scoring Levels 3 & 4)

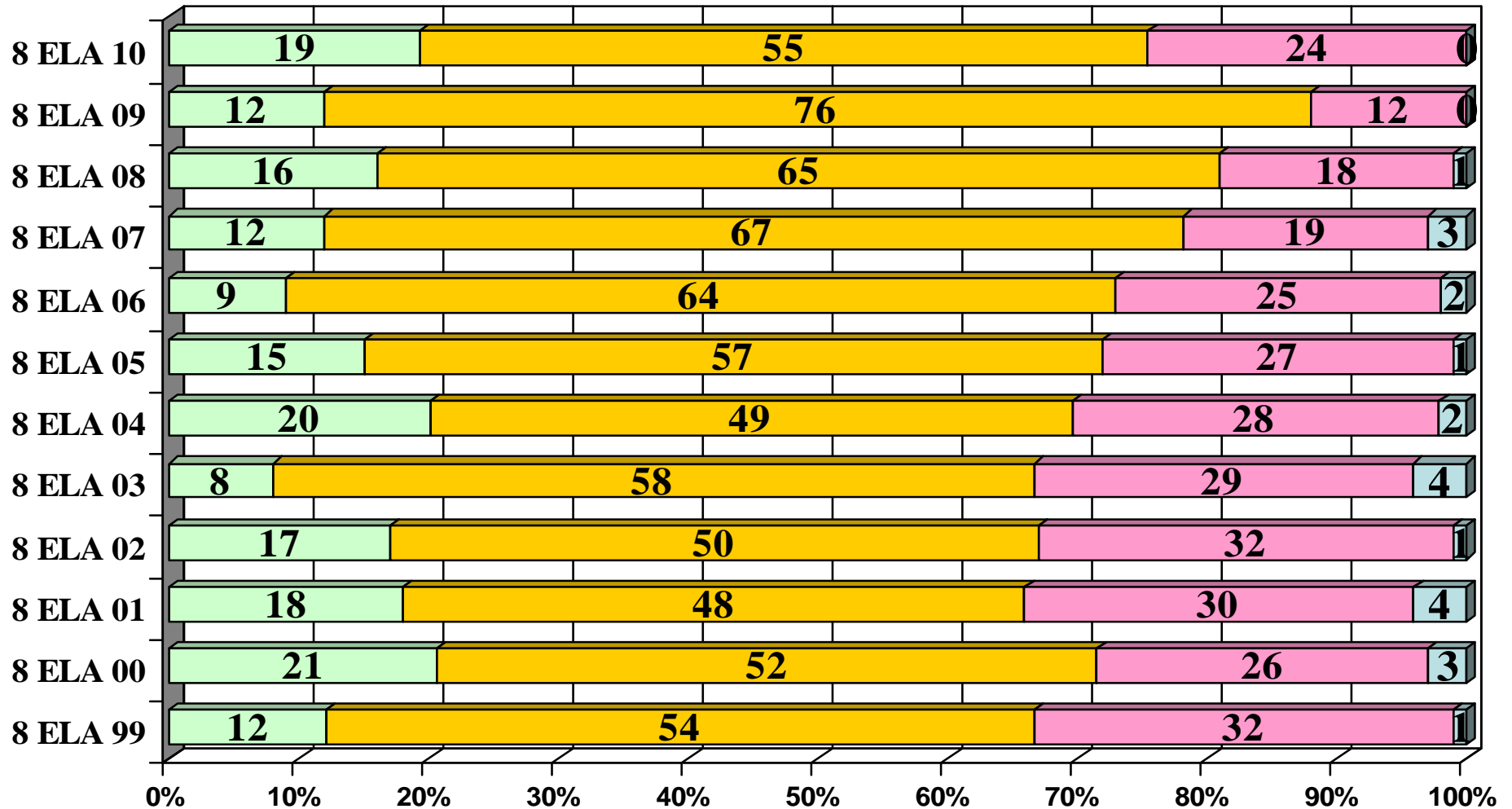
Level 4 Level 3 Level 2 Level 1



1999 - 2010 Grade 8 ELA Performance

(% Passing: Scoring Levels 3 & 4)

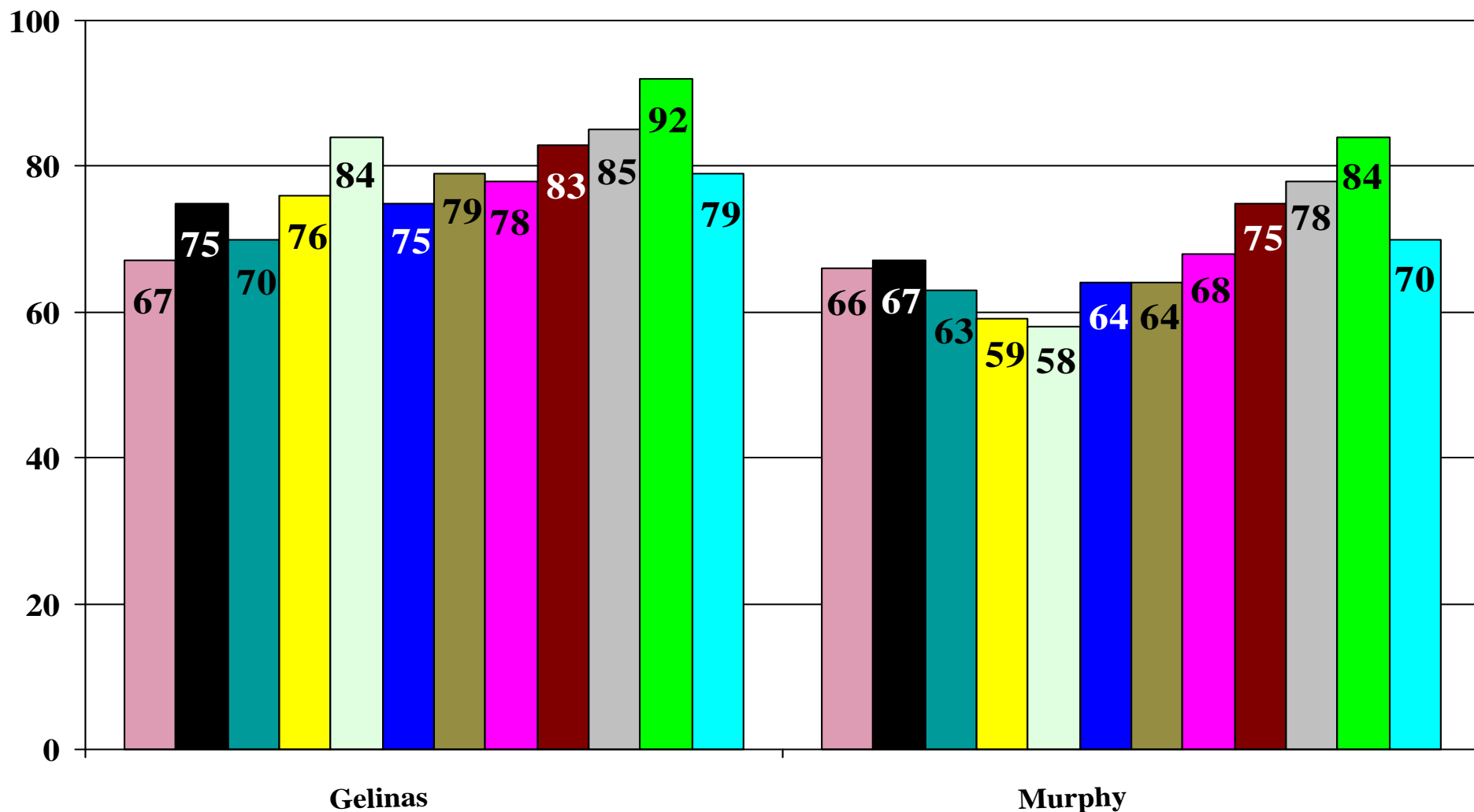
■ Level 4
 ■ Level 3
 ■ Level 2
 ■ Level 1



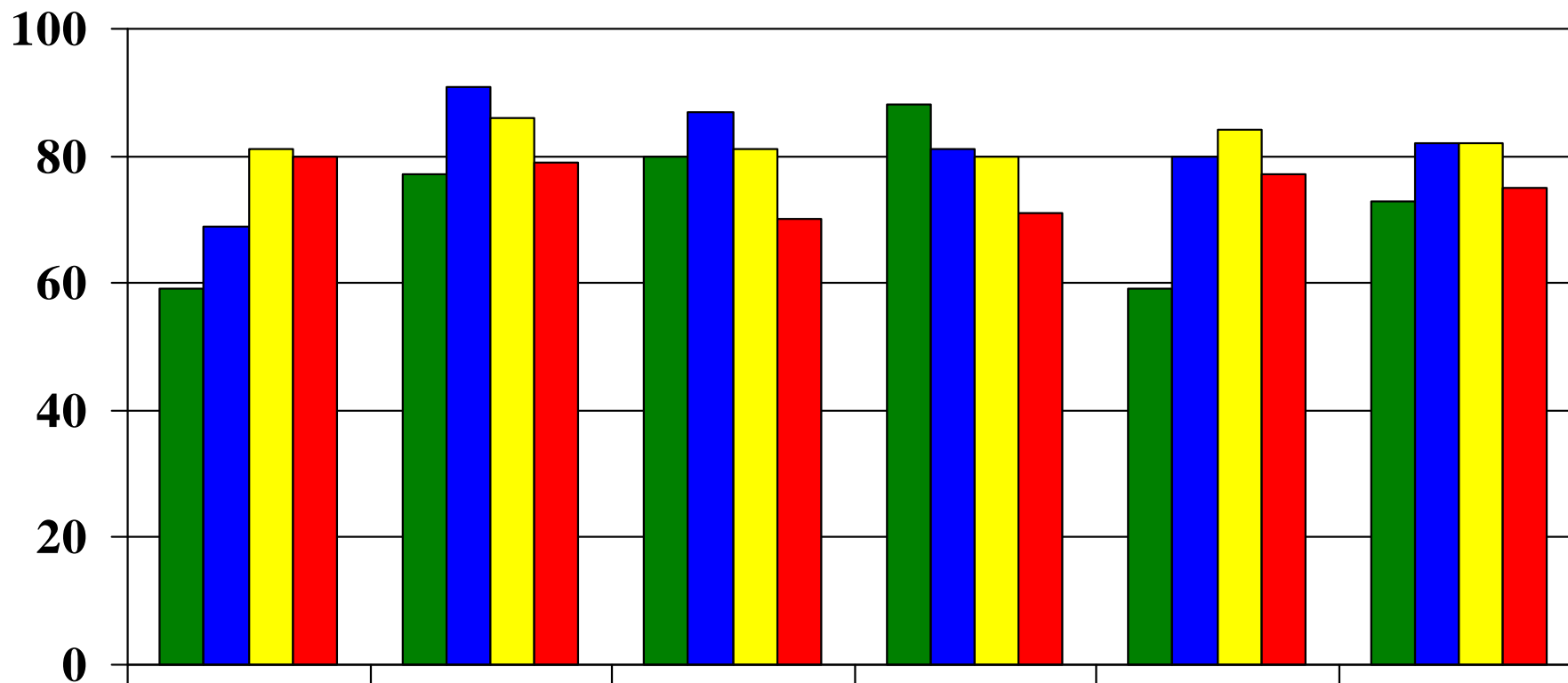
1999 - 2010 Grade 8 ELA

(Total Population % Passing: Scoring Levels 3 & 4)

1999 2000 2001 2002 2003 2004 2005 2006 2007 2008 2009 2010



2009-10 Grades 3 - 6 Math (%Passing: Scoring Levels 3 & 4)

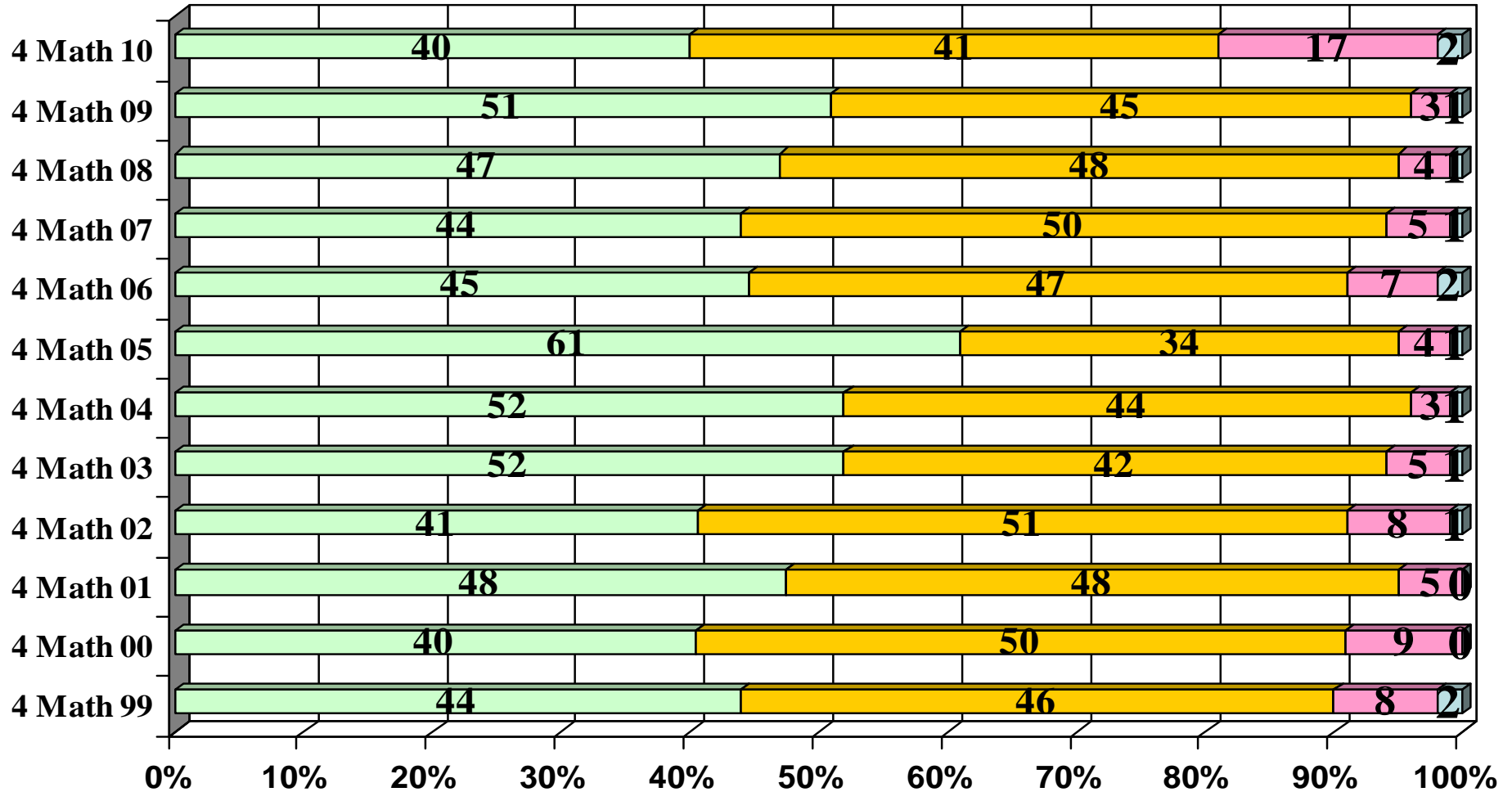


	Arrowhead	Minnesauke	Mount	Nassakeag	Setauket	District
3 Math	59	77	80	88	59	73
4 Math	69	91	87	81	80	82
5 Math	81	86	81	80	84	82
6 Math	80	79	70	71	77	75

1999 – 2010 Grade 4 Math Performance

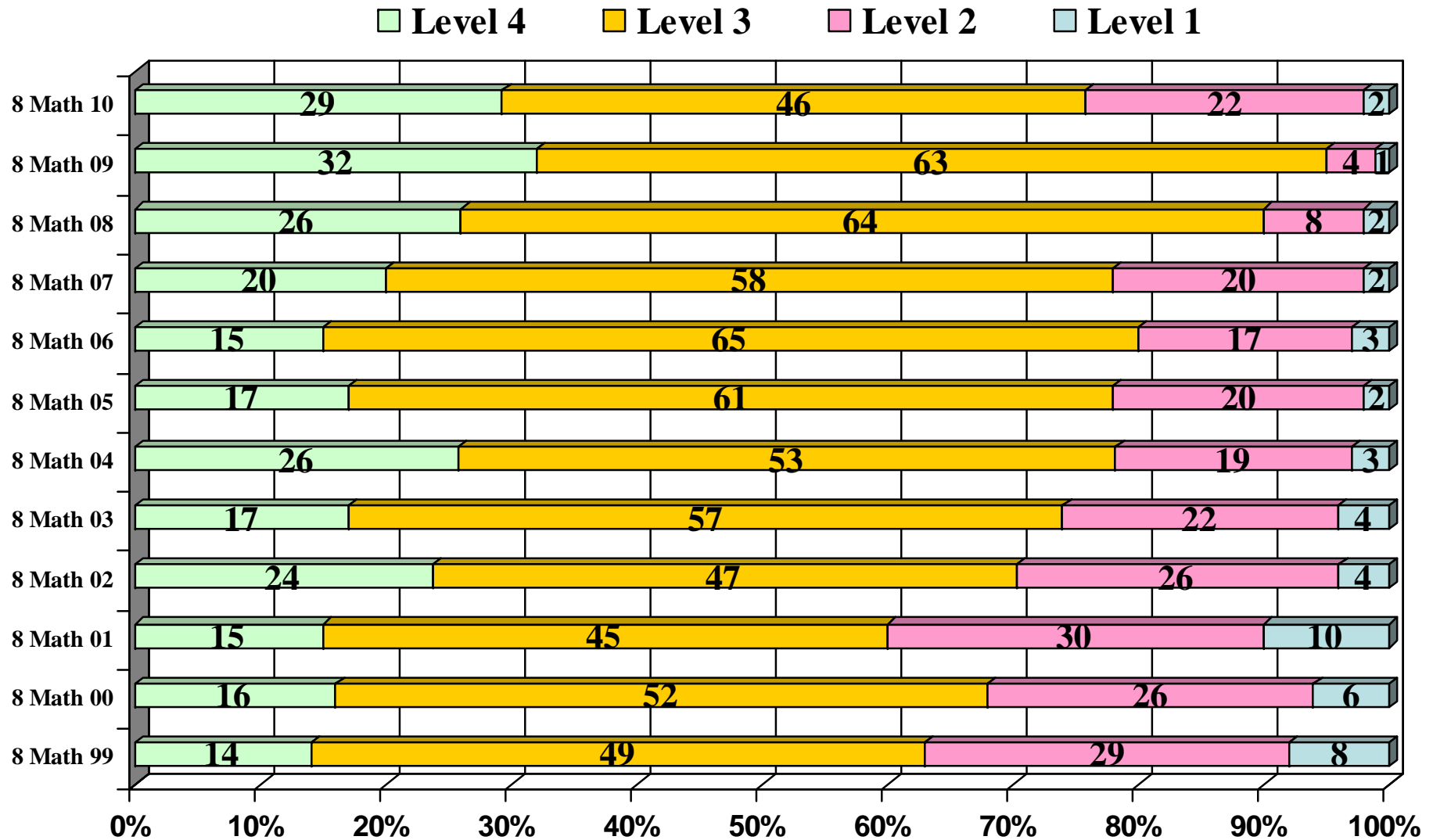
(% Passing: Scoring Levels 3 & 4)

■ Level 4
 ■ Level 3
 ■ Level 2
 ■ Level 1



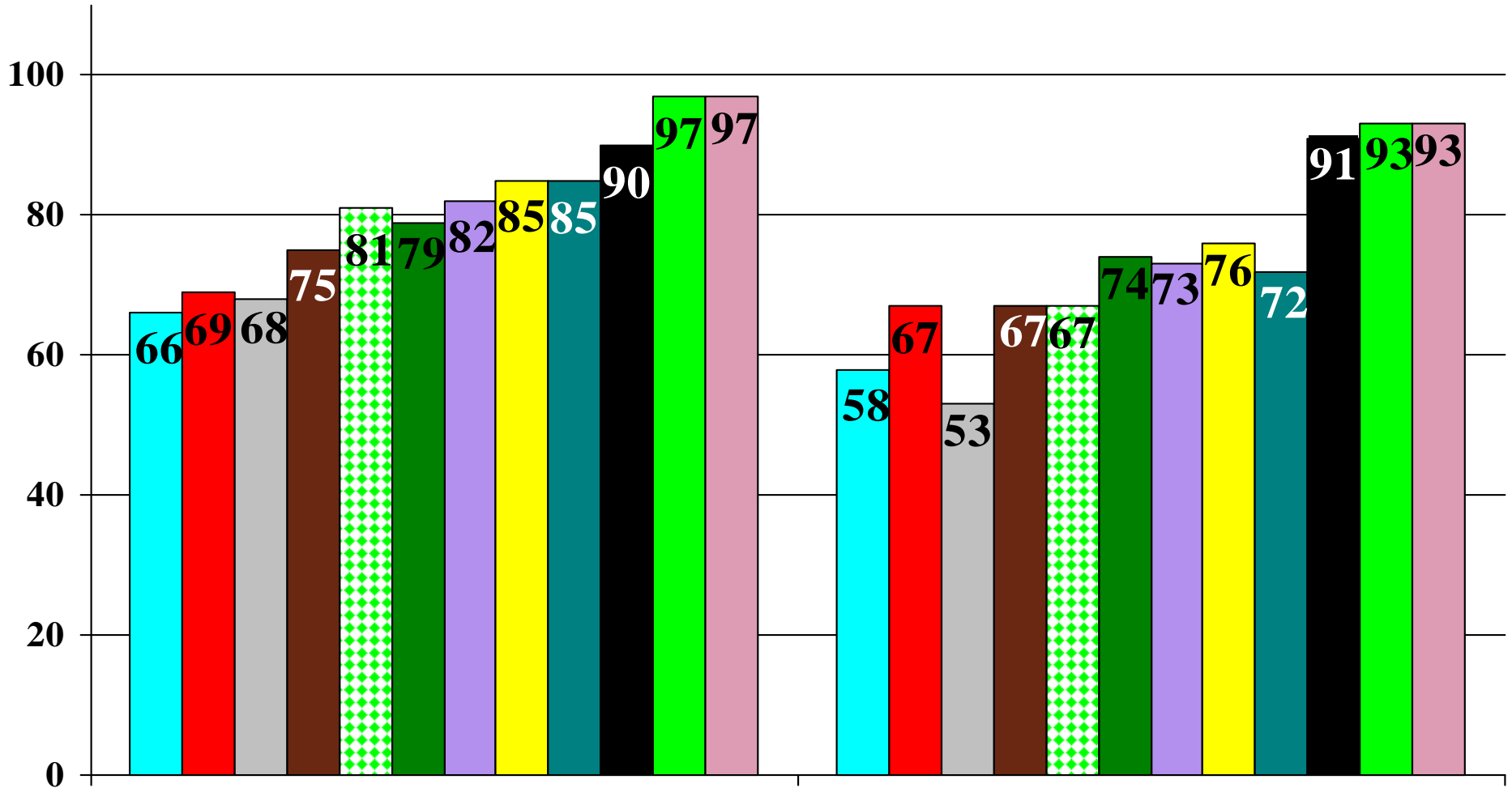
1999 – 2010 Grade 8 Math Performance

(% Passing: Scoring Levels 3 & 4)



1999 - 2010 Grade 8 Math (% Passing: Scoring Levels 3 & 4)

■ 1999 ■ 2000 ■ 2001 ■ 2002 ■ 2003 ■ 2004 ■ 2005 ■ 2006 ■ 2007 ■ 2008 ■ 2009 ■ 2010



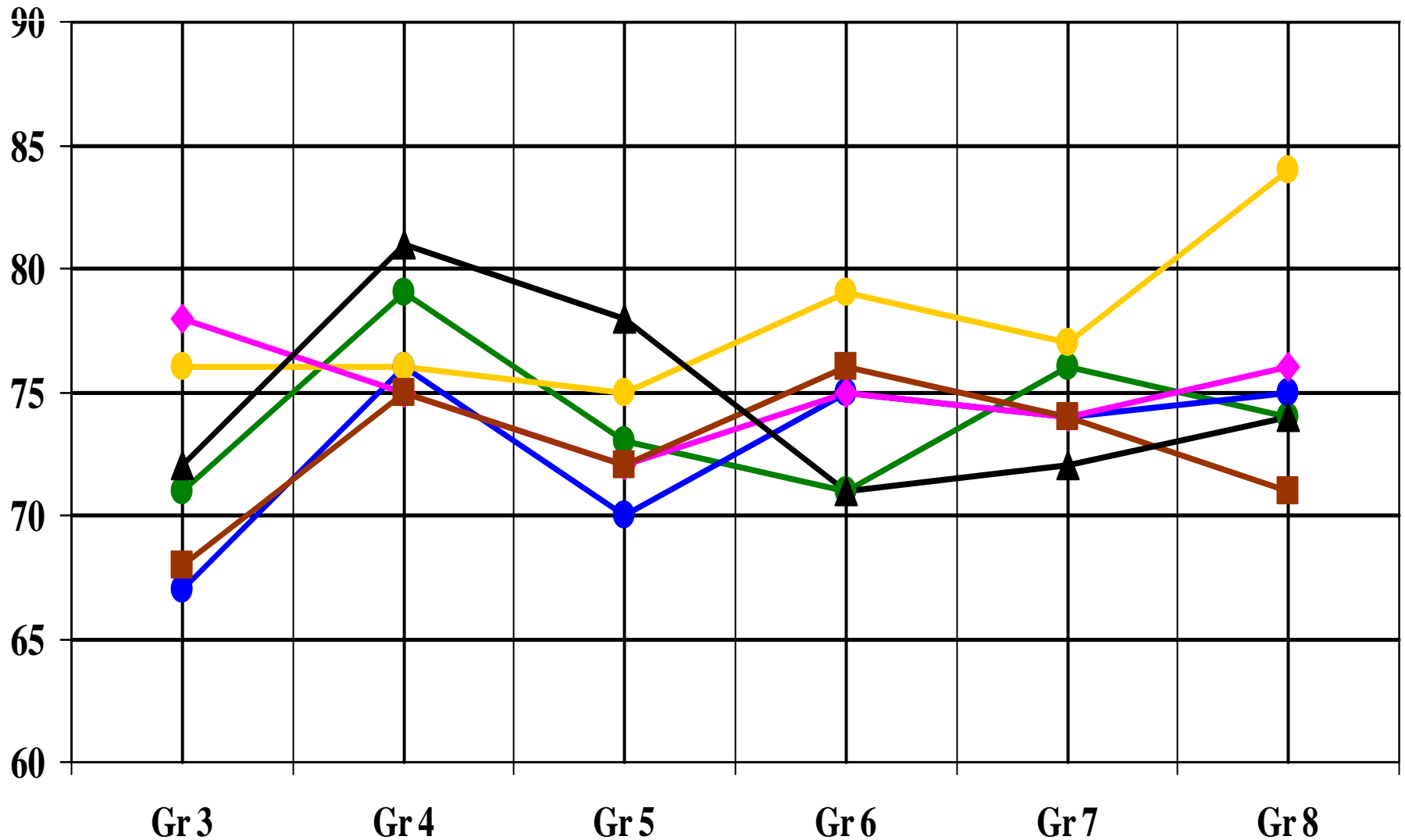
Gelinas

Murphy

Three Village Central School District
 Prepared by the Office of the Asst Supt for
 Educational & Pupil Personnel Services

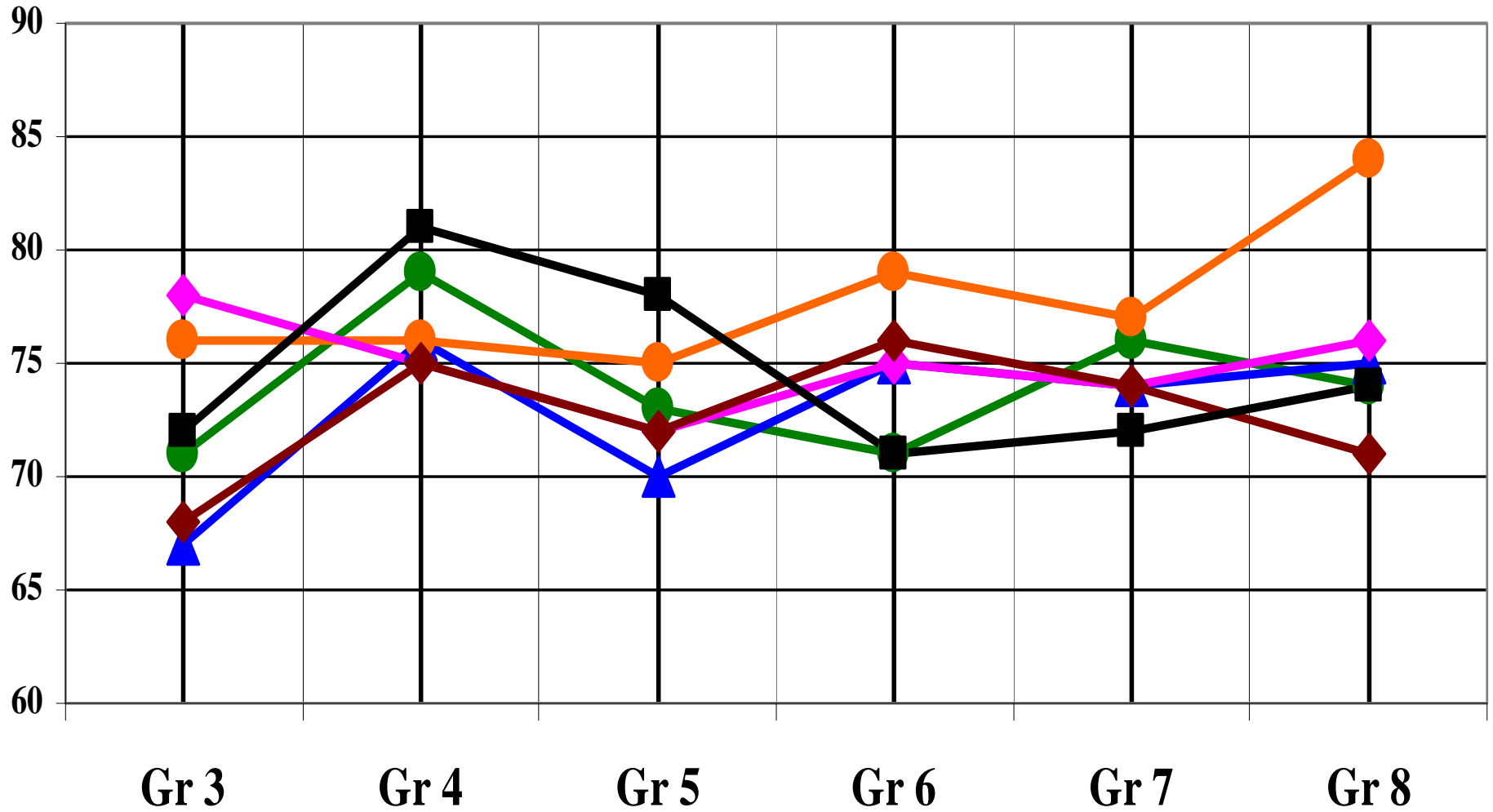
2009-10 Grades 3 - 8 ELA % Passing - (Levels 3 & 4)

Three Village Commack Half Hollow Hills Hauppauge Northport Smithtown



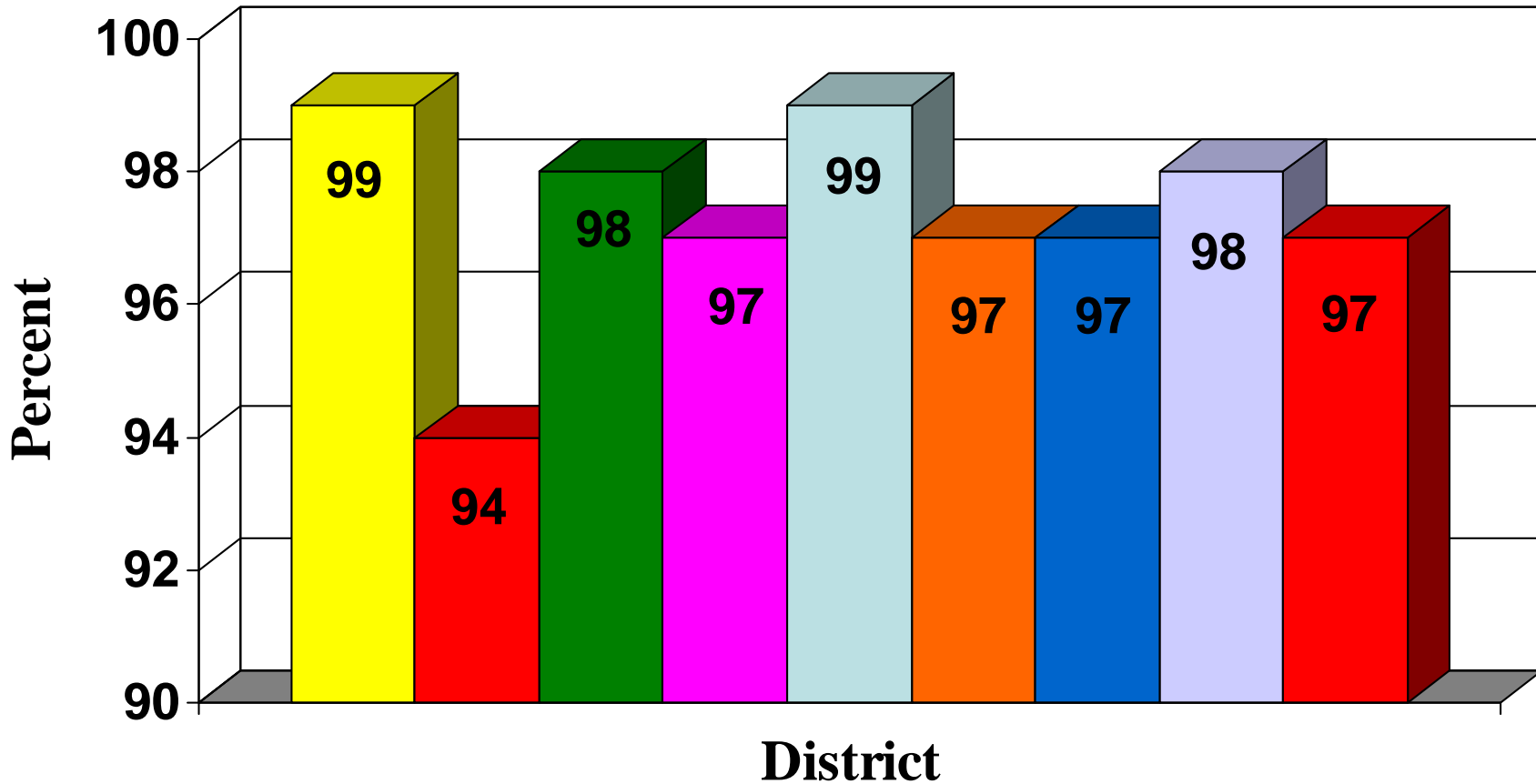
2009-10 Grade 3 - 8 Math % Passing (Levels 3 & 4)

Three Village Commack Half Hollow Hills Hauppauge Northport Smithtown

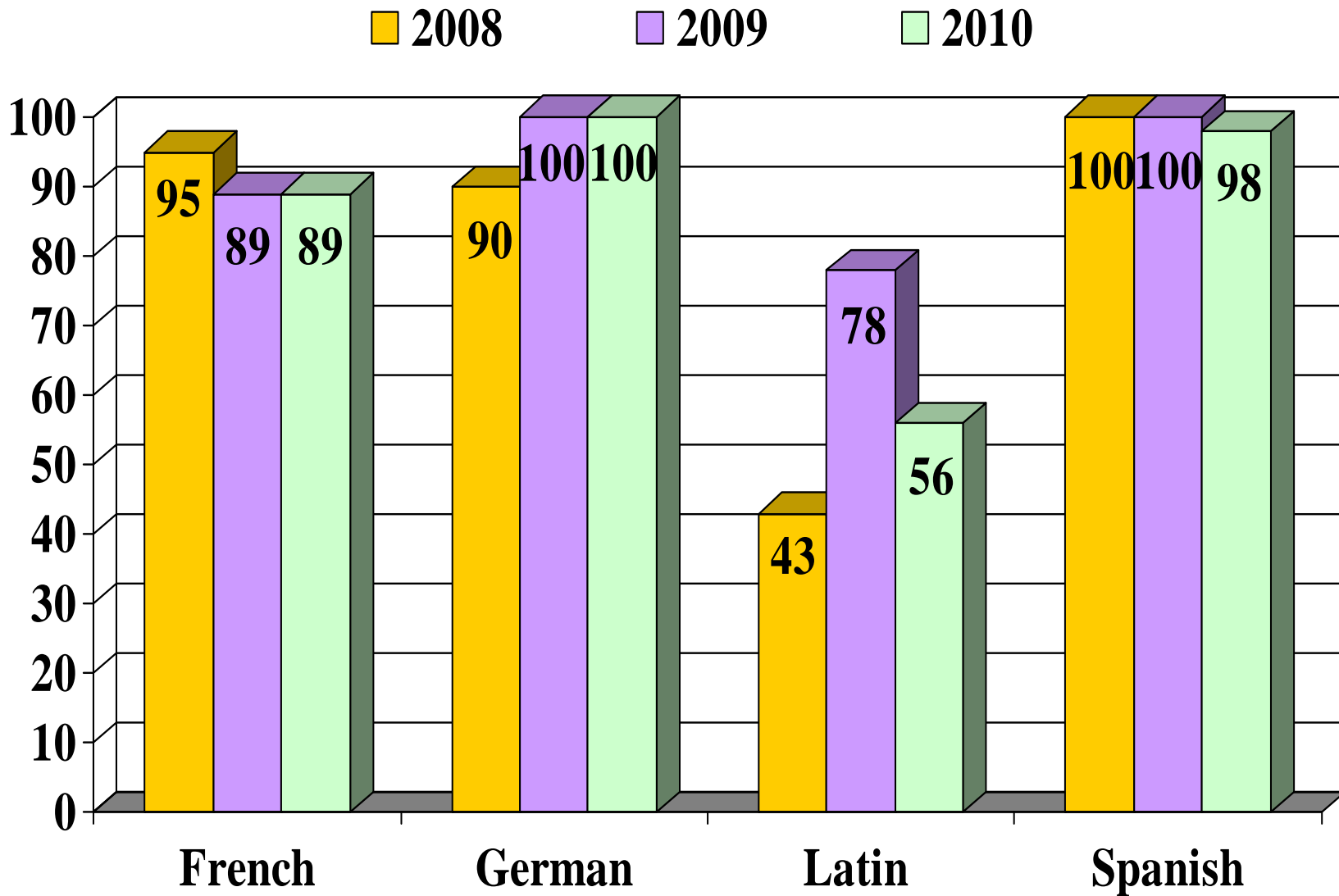


2002-2010 Grade 5 Social Studies (%Passing: Scoring Levels 3 & 4)

2002 2003 2004 2005 2006 2007 2008 2009 2010

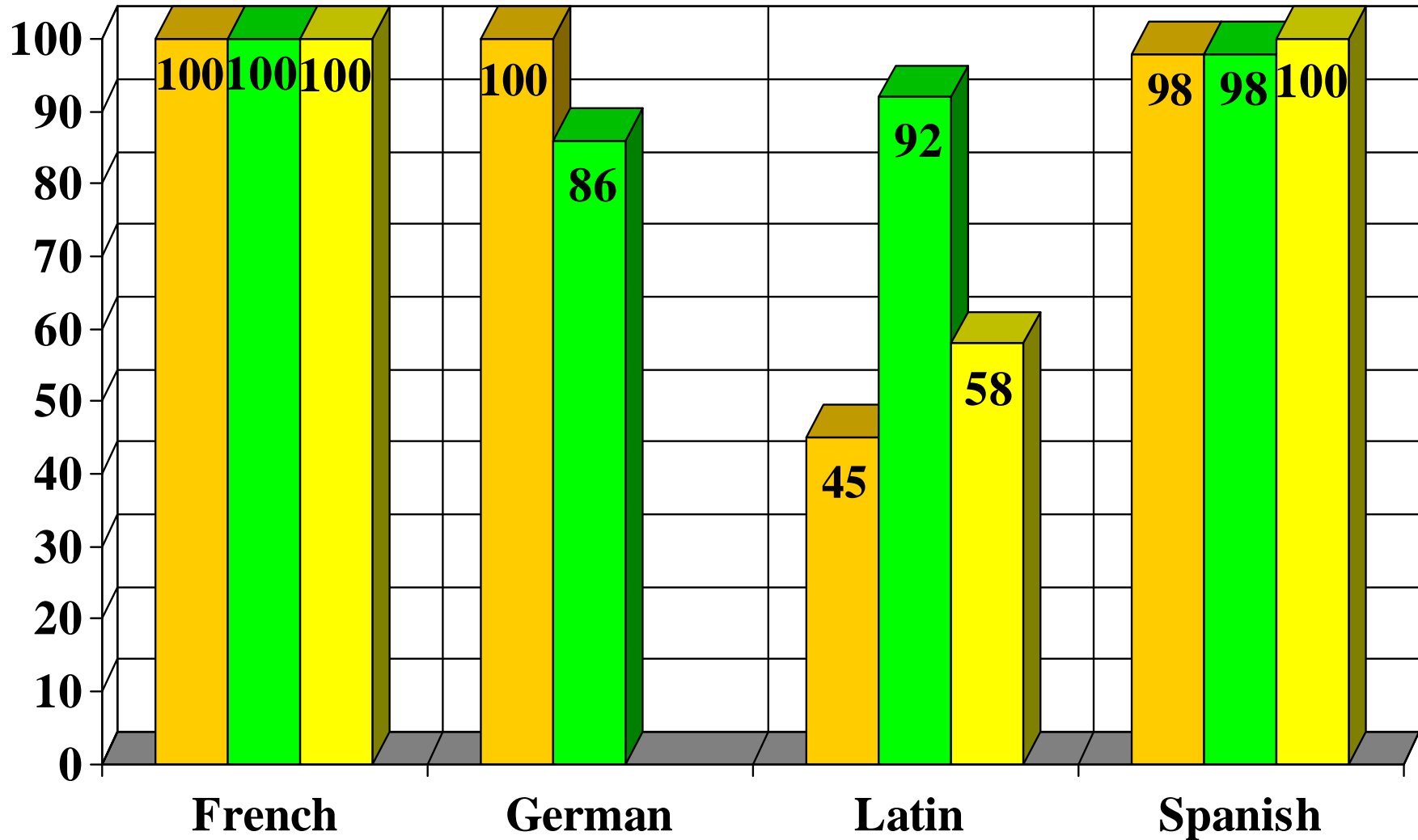


Global Languages Regents Results - Gelinas



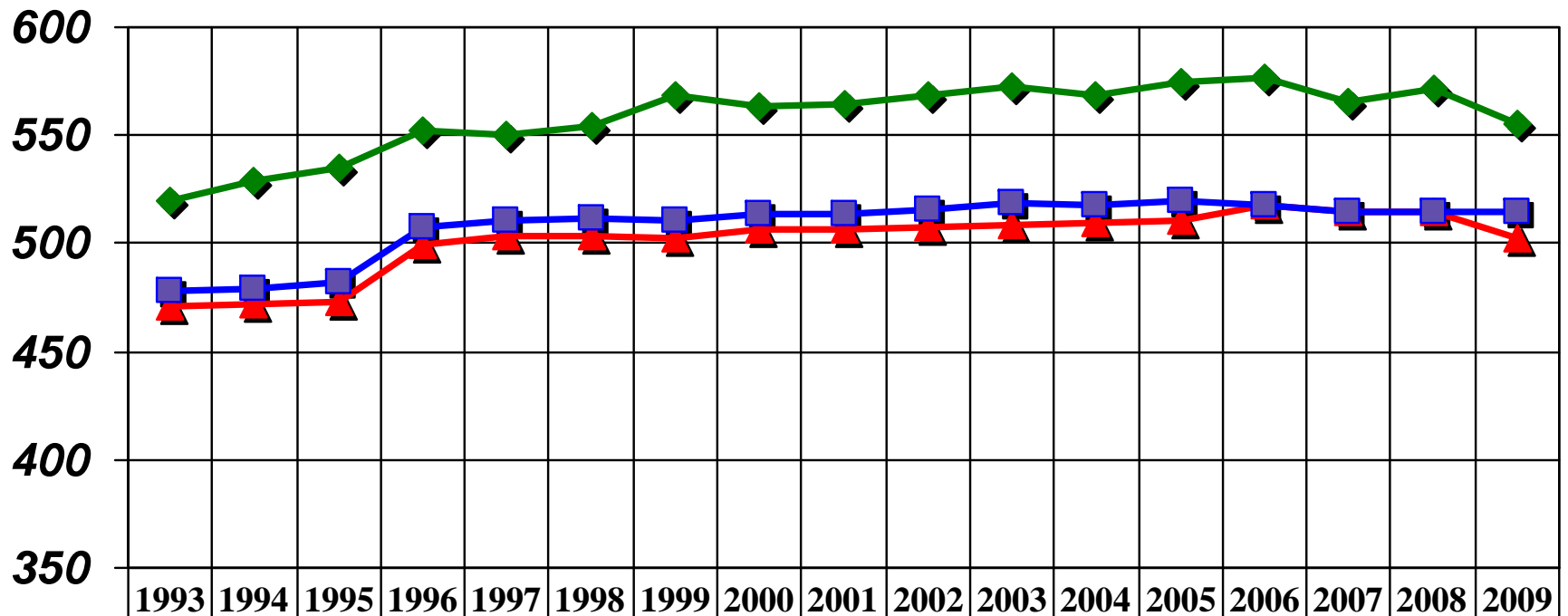
Global Languages Regents Results - Murphy

2008 2009 2010



Mean SAT Scores Mathematics 1993 - 2009

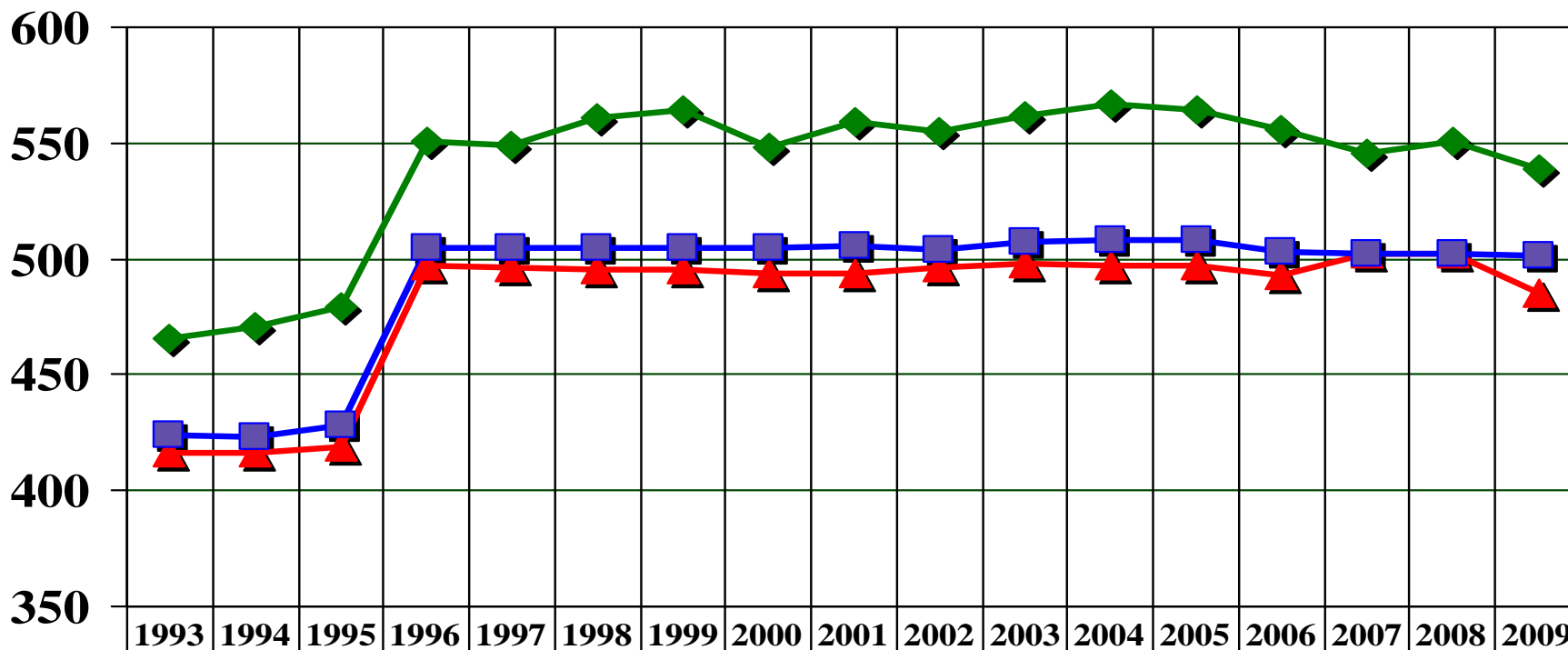
◆ *District* ▲ *NYS* ■ *National*



◆ District	520	529	535	552	550	554	569	563	564	568	573	569	575	577	565	572	555
▲ NYS	471	472	473	499	503	503	502	506	506	508	509	510	511	518	515	515	502
■ National	478	479	482	508	511	512	511	514	514	516	519	518	520	518	515	515	515

Mean SAT Scores Verbal 1993 - 2009

◆ *District* ▲ *NYS* ■ *National*



◆ District	466	471	479	551	549	561	564	548	559	555	562	567	564	556	546	551	539
▲ NYS	416	416	419	497	496	495	495	494	494	496	498	497	497	493	502	502	485
■ National	424	423	428	505	505	505	505	505	506	504	507	508	508	503	502	502	501